



2020 CATALOG



DeatschWerks is a company dedicated to researching, developing, manufacturing, and supplying the latest in high-performance fuel systems solutions. DW has built its name on combining high quality and ease of use into every product we sell.

HISTORY

2005

DeatschWerks is established with a 650cc Side Feed Fuel Injector for Nissans.



2011

Distribution of DW products expands internationally to over 200 dealers, covering more than 20 countries.



2007

Over 100 new Injector part numbers added to provide full coverage for sport compact applications.

2010

DW leaps into the Fuel Pump market with the release of the revolutionary DW300. At over 300lph it was the highest flowing In-tank Fuel Pump on the market.



2016

DW edges closer to a full fuel system offering with the release of Adjustable Fuel Pressure Regulators and takes a step into the future by releasing the first and only commercially available high-flow GDI EcoBoost Injectors.



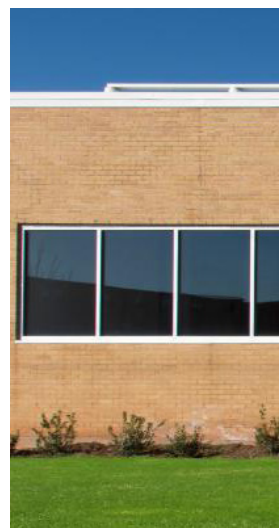
2014-2015

Product expansion ramps up with the release of Surge Tanks, In-line Fuel Pumps, Subaru Fuel Rails, and Fuel Filters alongside production of several new Injectors and Fuel Pumps.



2017-2019

The Fuel Pressure Regulator line expands to support applications up to 2000hp. DW's new innovative fuel rail line and DW400 in-tank fuel pump hit the market.





2013

DW releases the industry's most comprehensive Bosch EV14 injector line-up. The offering covers select sport compact applications, a full universal line, and a modern muscle line complete with calibrations for Ford and GM.

2012

DW expands its Fuel Pump line with two new offerings. The 255lph DW200 and compact fitment 265lph DW65c.



Table of Contents

Internet Tools	3-4
Fuel Injectors	5-6
Fuel Pumps	7-10
Filtration	11
Surge Tanks	12
Fuel Pressure Regulators	13
Fuel Rails	14
Lines & Fittings	15
Additional Fueling Products	16
Fuel Injector & Fuel Pump Price Guide	17-29
Electrical Connector Price Guide	30
Quick Reference Fuel Pump Guide	31-32
Fuel Pump Fitment Kit Price Guide	33
Bosch EV14 Universal Fuel Injector Price Guide	34
Lines & Fittings Price Guide	35-37
Filters, Surge Tanks, Regulators Price Guide	38
Fuel Rail Price Guide	39
Power Sports Price Guide	40-42
Fuel Injector O-ring Kits	42



INTERNET TOOLS

Fuel Calculators / Tuning Data / Install Guides / Find a Dealer

At DeatschWerks we support our products with a suite of online tools to assist you in making the right purchase decisions, and successfully utilizing our products. Whether you need to determine the correct injector or pump size, need technical tuning data, or need to find a local DW dealer, our internet tools are here for you.

YEAR MAKE MODEL LOOK UP

DW specializes in vehicle-specific fuel injectors and fuel pumps, use the year make model lookup at www.deatschwerks.com to find the right fuel pumps and injectors for your application

FUEL CALCULATORS

Our online fuel system calculators help you choose the correct injectors and pump for your build.

Fuel Injector Calculator

The size of fuel injector needed for any particular application is a function of the target horsepower, number of cylinders, induction type, type of fuel, and duty cycle.

A screenshot of the Fuel Injector Calculator interface. It features several input fields: 'TARGET CRANK HP' with a value of 600, '# OF INJECTORS' with a value of 6, 'INDUCTION TYPE' with radio buttons for 'N/A', 'TURBO', and 'S/C', 'FUEL TYPE' with radio buttons for 'GASOLINE', 'RACE GAS', and 'E85', and 'MAX DUTY CYCLE %*' with a value of 90. At the bottom, there are 'CALCULATE' and 'RESET' buttons.

A screenshot of the Fuel Pump Calculator interface. It features several input fields: '# OF INJECTORS' with a value of 6, 'INJECTOR FLOW RATE*' with a value of 1000, 'BASE FUEL PRESSURE' with a value of 43.5, and 'BOOST PRESSURE' with a value of 24. There are radio buttons for 'RETURN' and 'RETURNLESS' under 'FUEL SYSTEM TYPE'. At the bottom, there are 'CALCULATE' and 'RESET' buttons.

Fuel Pump Calculator

The size of fuel pump needed for any particular application is a function of the number of cylinders, injector flow rate, fuel pressure, boost pressure, and fuel system type (return vs returnless).

Flow vs Pressure Calculator

Use this calculator to estimate changes in flow rates when a change in base fuel pressure is made.

A screenshot of the Flow vs Pressure Calculator interface. It features several input fields: 'CURRENT FUEL PRESSURE' with a value of 43, 'CURRENT FLOW RATE' with a value of 750, and 'NEW FUEL PRESSURE' with a value of 58. At the bottom, there are 'CALCULATE' and 'RESET' buttons. The result 'NEW FUEL RATE' is displayed as 871.

A screenshot of the Flow Rate Conversion interface. It features three input fields for conversion: '2200' (cc/min), '209' (lbs/hr), and '26' (g/s). At the bottom, there are 'CALCULATE' and 'RESET' buttons.

Flow Rate Conversion

Do you know how to convert cc/min to lbs/hr or gal/sec? Our calculator does!

FIND A DEALER

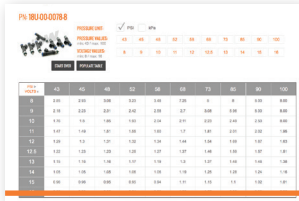
Use our dealer locator to find a DW Dealer anywhere in the world.

INJECTOR TUNING DATA

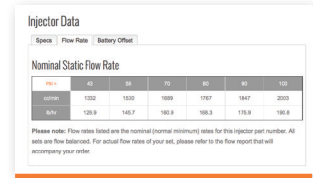
Fuel injector characterization is critical for a proper tune. DW provides injector data in several formats to support the needs of our customers, and calibrators.

Injector Data

Injector specifications, flow rates, and battery offsets are provided on the product page for every single injector that DW sells.



Part No.	42	43	44	45	46	47	48	49	50	51	52	53	54	55	56	57	58	59	60
Flow Rate (cc/min)	1332	1530	1699	1787	1847	2003													
Battery Offset	128.9	146.7	163.8	168.3	178.9	190.9													



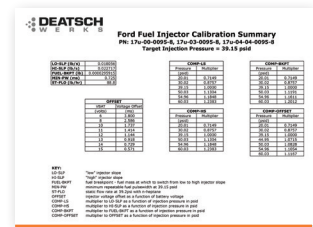
Part No.	42	43	44	45	46	47	48	49	50	51	52	53	54	55	56	57	58	59	60
Flow Rate (cc/min)	1332	1530	1699	1787	1847	2003													
Battery Offset	128.9	146.7	163.8	168.3	178.9	190.9													

Battery Offset Calculator

The battery offset calculator allows you to create a customized battery offset table for any DW injectors based on the pressures, and voltages you require.

Modern Muscle Calibration Summaries

Ford, GM, and Dodge Tuners all require data in the formats they are familiar with. All DW injectors come with the specifically formatted data that calibrators are looking for. For Ford that means data in the familiar Ford Calibration Summary format, including offsets, lo slope, hi slope, break point, minimum pulse, and pressure compensators. For GM our data tables include offsets, flow vs. pressure, short pulse adder, and minimum pulse width vs. RPM. And for Dodge we've got all the Hellcat tuning data you need.



Injector Part No.	Flow Rate (cc/min)	Battery Offset	Lo Slope	Hi Slope	Break Point	Min Pulse	Pressure Compensator
42	1332	128.9	0.00	0.00	0.00	0.00	0.00
43	1530	146.7	0.00	0.00	0.00	0.00	0.00
44	1699	163.8	0.00	0.00	0.00	0.00	0.00
45	1787	168.3	0.00	0.00	0.00	0.00	0.00
46	1847	178.9	0.00	0.00	0.00	0.00	0.00
47	2003	190.9	0.00	0.00	0.00	0.00	0.00

Sport Compact Calibration Data

DeatschWerks has injector data formatted for many popular sport compact applications such as Honda, Nissan, Subaru, and Mitsubishi. Scalers, latencies, minimum pulse widths, and other essential data can be found in formats ready for plug and play into your Hondata, Cobb AP, or ECU Flash software.

Stand-alone Calibration Data

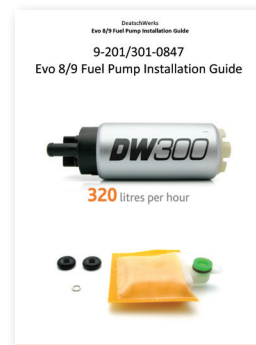
DW has injector data for many of our most popular injectors formatted specifically for standalone systems, such as Fuel Tech, Haltech, Holley, and MoTeC.

PUMP INSTALL GUIDES

If you have questions about installing your DW fuel pump, our install guides will walk you through step-by-step.

Fuel Pump Characterization Data

DW has performed extensive testing of their fuel pumps at a wide range of pressures and voltages. This data characterizes the performance of the pump over all possible operating conditions. Pump characterization data can be especially useful to customers designing demand-regulated returnless fuel systems. Only DW offers such extensive Data



FUEL INJECTORS

DeatschWerks Injectors combine precision, fitment, data, and value to maximize your performance outcome



DW pioneered the application specific fitment approach to high performance fuel injectors in 2005 when “universal” was the standard. This passion for innovation has continued over the years and has culminated in the current lineup which represents the most comprehensive and best-supported injector line in the industry.

Most Comprehensive Offering

Fuel injectors are not a one-size-fits-all type of product. The right fuel injector must combine the elements of fitment, coil impedance, flow rate, and tuning data into one injector specific to your engine’s needs. This is a lot to ask of an injector lineup consisting of only a handful of options. In addition to a full EV14 line with flow rates from 440cc to 2200cc, the DW line consists of many unique injector offerings that our competitors neglect:

- Low impedance up to 1800cc
- Gasoline Direct Injection (GDI)
- Sidefeed injectors up to 1000cc
- Brands from Denso, SMP, Hitachi, and Delphi
- 6 Different electrical connector configurations

An offering this comprehensive can be difficult to navigate. Knowing this, DW has maintained an application-specific approach to fuel injectors to make shopping a simple 3 step process:

1. Use our online calculators to find the flow rate you need.
2. Use our online year, make, model look up to find part numbers for your vehicle.
3. Use the support tab on our homepage to find your tuning data.
4. Call our support team for help selecting the right product for your build

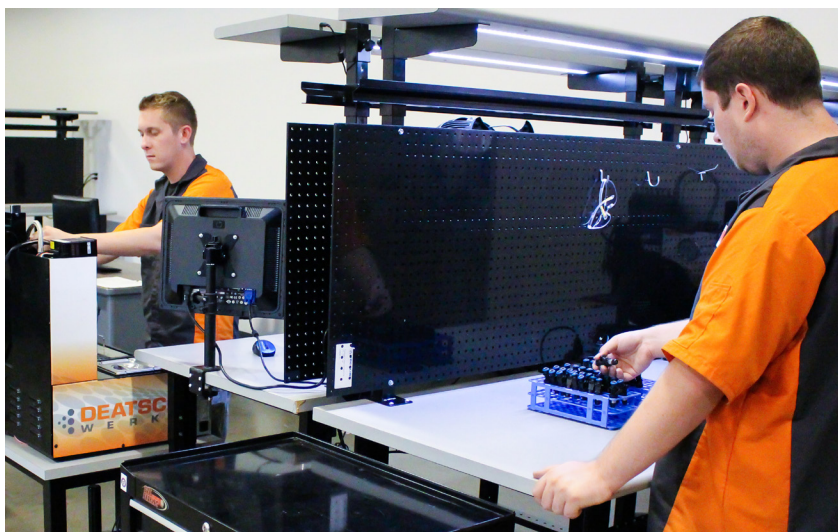
The Application Specific Approach

In 2005 DeatschWerks revolutionized the fuel injector market by offering drop-in fitment, application specific fuel injectors. Before then, universal fuel injectors were the norm and customers were left to their own means to choose, fit, and tune their injectors. When you shop at DW, you shop year, make, and model. All the injectors listed for your model are engineered to fit your OE harness, OE fuel rail and OE manifold. DW customers spend less time installing and tuning, and more time enjoying the increased performance of their car.

Proper Data is a Must

The right tool, used incorrectly, yields substandard results at best. Fuel injectors follow this same universal law. Proper data is required for proper tuning. All DW injectors are fully characterized in-house via SAE J1832 standards. Injector data is available in General Characterization Summaries and Application Specific formats. Using the data is easy. Often it is cut and paste from the DW excel sheet to the tuning software.

Development of accurate injector data is a complex process, but there are no shortcuts to a proper calibration. DW has developed specially designed and calibrated flow benches utilizing digital flow meters, which are required to measure the precise fuel mass needed for proper characterizations. The data acquisition process consists of collecting over 450 data points per injector part number. These data points cover pulse widths, pressures, and voltages that the injectors will experience once installed in your engine. The collected data is statistically analyzed, scrubbed and formatted into a General Characterization Summary. This Summary can then be formatted into application specific formats for different makes, models, and tuning platforms. The application specific data is then in-car optimized by one of our tuning partners.





EV14 Technology



HIGHER FLOW



FASTER RESPONSE



RACE FUEL COMPATIBILITY

DeatschWerks EV14 sets the bar for high performance fuel injection with the latest Bosch technology. Higher flow rates, faster response times and race fuel compatibility are what sets DW EV14's apart from all others. EV14's come with full characterization data for easy tuning. Most EV14 injectors have stainless steel internals for compatibility with ethanol blended fuels, methanol blended fuels and MTBE-oxygenated fuels including Q16.

Dynamic Flow Matching

Quality injectors mated to proper calibration data will still perform poorly as a system if the injector set is not properly flow matched. The DW dynamic flow matching process ensures each set works together as a system to fuel your engine properly. Fuel injectors do not operate in a static state so why test them in a static state? In the engine, fuel injectors are a very dynamic component, constantly changing frequencies and pulse widths to precisely deliver the fuel needed. The DW multi-point dynamic flow testing process mimics these conditions by testing at multiple pulse widths within each of the ranges below:

Pulse Width (ms)	2	3	4	5	6	7	8	Static
Flow Cycle	20	30	40	50	60	70	80	100
Pin Injector #								
1	516	516	516	516	516	516	516	516
2	516	516	516	516	516	516	516	516
3	516	516	516	516	516	516	516	516
4	516	516	516	516	516	516	516	516
Avg Flow	516	516	516	516	516	516	516	516

Flow data taken from one set of injectors. *All injectors go through our rigorous testing to ensure a balanced set.

Low Range (1-2 milliseconds) – Low pulse widths are used during idle, light throttle cruising, and deceleration. However, expensive electronic flow meters are required for accurate testing in this range so few companies actually balance their injectors this low. Low pulse width balancing is crucial for a smooth idle on large injectors.

Transitional Range (2-4 milliseconds) – The transitional range covers the pulse widths that typically make up the non-linear range of injectors. Although most DW injectors are linear well into the low pulse width range, transitional balance is important because many high flow injectors spend a majority of time in this range.

Linear Range (4-10+ milliseconds) – The linear range pulse widths are used during medium and high load conditions. Proper balancing in this range allows for advanced timing and increased boost pressure to yield higher and safer peak horsepower. Many companies that dynamically balance their injectors only flow test in the linear range.

Direct Injection

Gasoline Direct Injection (GDI) is the future of automobile fuel delivery, and DeatschWerks offered the first commercially available high-flow GDI injectors.

- 1700cc/min @ 100 bar
 - 30% increase in flow over OE injectors
- OE Spray Pattern
 - Patent Pending Technology retains OE start up, fuel economy and drivability
- Street Tested
 - Thousands of miles logged on all applications offered
- Currently Available for Popular Ford Applications
 - 2.3L EcoBoost Mustang
 - 3.5L EcoBoost F-150
 - 2.0/2.3L EcoBoost Focus ST/RS
 - More Applications Coming Soon!



HDEV 1700



2.0L EcoBoost



3.5L EcoBoost

FUEL PUMPS

DW offers more fuel pump options to deliver the flow you want with the fitment you need



Fuel pumps are not a one-size-fits-all type of product. Proper fuel delivery to your engine involves combining the right fitment and the right flow. This is why the DW fuel pump line is built to cover 7 different dimensional formats each having different fluid connections, electrical connections, diameters, and lengths. DW pump formats cover standard fitment in-tank, compact fitment in-tank, specialty fitment in-tank, and 2 different universal in-line pumps. Each pump format is available in up to 4 different flow rates yielding over 20 different format+flow combinations to ensure you have the right pump for your build.

Application Specific Fitment

DW pioneered fuel injector application specific fitment. That experience has been applied to the DW line of fuel pumps. To achieve this feat, DW has built a library of over 100 different OE fuel pump modules from which application specific fitment kits can be made.

First the proper format+flow combinations are selected. Then the O-rings, electrical connectors, clamps, filters, and spacers are chosen. Next, the pump is installed and bench tested in the OE module to ensure proper fitment and performance. Lastly, the entire process is documented and published into step-by-step illustrated instructions, which can be downloaded from our website and used by the customer during installation. Application specific product development is a complex process, but DW has made it easy for the end customer... All you have to do is choose your year, make, and model.



High Torque = High Flow

A fuel injected internal combustion engine is a dynamic system. Fuel flow requirements vary greatly by rpm and load. However, one law remains universal: forced induction applications require more flow at higher pressures. Knowing this fact, DW has engineered their fuel pumps to maximize flow at higher pressures. By designing the armature for torque bias, delaying pressure relief activation, and maximizing impeller efficiency; DW has created a line of pumps with an extremely flat flow curve. Higher flow at higher pressure delivers the fuel your engine demands.



9-309-1018 Fitment Kit and Pump

Every DW Fuel Pump comes with a direct fit or universal install kit, including all the hardware needed to install the fuel pump as well as a filter sock.

Ethanol Compatibility

Today's ethanol-enriched fuels are more corrosive than the fuels of the past. High-octane premium grade pump gas can contain up to 15% ethanol and e85 is becoming increasingly popular as an inexpensive, readily available race fuel. Regardless of what fuel you prefer, DW has specifically engineered their pumps with ethanol in mind:

- Composite Impeller – DW turbine impellers are made of a lightweight composite that is both efficient and impervious to the corrosive nature of ethanol.
- Encapsulated Armature – DW motor armatures are fully encapsulated to protect the copper windings from ethanol deterioration.
- Carbon Commutators and Brushes – The utilization of carbon in the wear components of the pump leads to a much longer life especially in high heat and high pressure conditions.
- Endurance Testing – DW performs in-house HALT (Highly Accelerated Life Testing) on all pump designs and in various fuels to find and eliminate common modes of failure.

Even if you don't use ethanol-enriched fuels, the extra work is not wasted. All of the above mentioned design attributes translate to a more dependable, longer life fuel pump regardless of the fuel used.



Find fuel pump part numbers and prices on page 17-30



Just like DW fuel injectors, every single DW fuel pump undergoes multi-point performance testing by a trained technician to ensure it meets our, and our customers' high standards. Although it is a labor intensive process, it gives customers confidence right out of the box.

Performance testing includes:

- Flow at pressures of 40psi, 60psi, 80psi, 100psi
- Amperage draw at each pressure
- PRV activation point
- Check valve function
- Cavitation
- Qualitative observations

FUEL PUMPS

DW pumps use a high torque motor that creates more flow at higher pressures

Standard Fitment



• Flows **165** lph 4.2 amps @ 40psi



• Flows **255** lph 9.2 amps @ 40psi



• Flows **340** lph 12.0 amps @ 40psi



• Flows **415** lph 16.5 amps @ 40psi

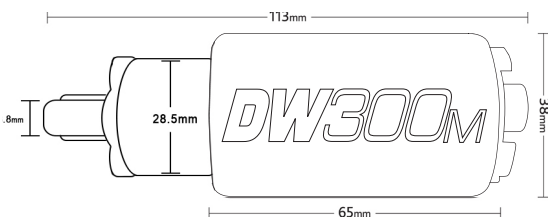
Specialty Fitment



• Flows **265** lph 10.5 amps @ 40psi



• Flows **265** lph 12.7 amps @ 40psi



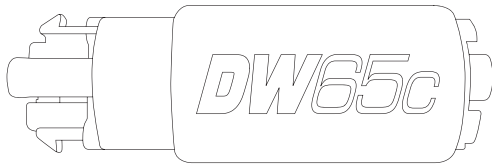
• Flows **340** lph 11.2 amps @ 40psi



• Flows **210** lph 5.1 amps @ 40psi

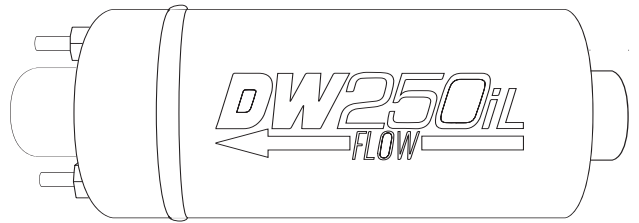
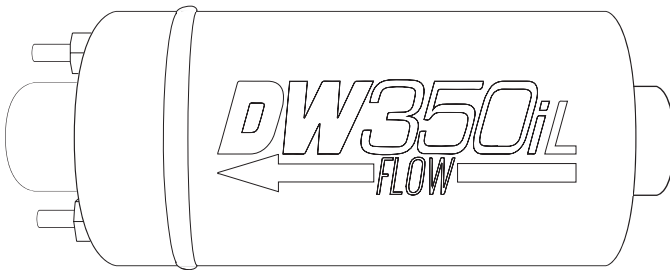
*All Data 13.5V @40psi

Compact Fitment



- Flows **265** lph 11.4 amps @ 40psi
- Flows **340** lph 11.7 amps @ 40psi

Universal In-line



- Flows **350** lph 12.0 amps @ 40psi
- Flows **250** lph 9.9 amps @ 40psi

*All Data 13.5V @40psi

Chris Forsberg - VR38TT powered 370z - Formula Drift

Fueled by DeatschWerks 1500cc Injectors, two DW400 Fuel pumps, DWFF160 Fuel Filter, DW lines and fittings, and a DWR1000 Fuel Pressure Regulator making over 900hp.



FILTRATION

DW fuel filters combine innovation and quality to deliver the industry's most comprehensive protection

Today's ethanol-enriched fuels are more corrosive than the fuels of the past. High-octane premium grade pump gas can contain up to 15% ethanol and e85 is becoming increasingly popular as an inexpensive readily available race fuel. Regardless of what fuel you prefer, protecting your expensive fuel system components from the corrosive nature of ethanol is more important than ever. The DW dual-stage magneto-mechanical fuel filters were developed specifically to address the issues with modern day fuels.

Dual Stage Offers Twice the Protection



Stage One - Magnetic Filtration

Fuel system corrosion caused by ethanol-blended fuels can release ferrous contaminants that destroy expensive fuel injectors and pumps. Stage one filtration traps these contaminants with a 35mm neodymium magnet. The magnet is placed at the filter inlet, which maximizes contact with the incoming fuel and creates zero flow restriction.

Stage Two - Mechanical Filtration

Non-ferrous materials make up the majority of fuel system contaminants and are trapped in stage two. This stage utilizes conventional and proven mechanical filtration methods. All DW filters feature serviceable pleated 304 series stainless steel elements, which provide a large surface area for maximum filtration capacity and minimum flow restriction. Stainless steel elements are the premium and simple choice due to their compatibility with all fuels including pump gas, race gas, MTBE, ethanol, methanol, and diesel. In addition, stainless steel elements provide higher temperature tolerances and longer life spans over competitors' fiberglass and paper filter elements.

Comprehensive Options

Universal In-Line Filters

DW in-line fuel filters are available in several formats to fit your filtration needs. Two EFI-specific pore sizes are available (5 μ -GDI, 10 μ -efi, 40 μ -carb, and 100 μ -pre-pump) for pre-pump or post-pump fitment. Each pore size is available in three different housing sizes (70mm, 110mm, and 160mm) to accommodate your flow, service interval, and space requirements. All housings are anodized T6061 aluminum with -10AN ORB inlets and -6, -8, and -10AN ORB outlets. DW also offers a unique surge tank fuel filter that threads directly onto the 250iL or 350iL in-line pump.



Application Specific Module Filters

DW has taken the application specific approach which is popular in fuel injectors and fuel pumps and applied it to filtration. Many modern fuel pump modules contain cheap cardboard elements that degrade and clog when used with e85. DW module filters feature high quality stainless steel elements that offer better filtration, serviceability, and compatibility with all fuels. In addition, the module filters fit in the tank, which simplifies plumbing and puts the filter out of sight for a more stealth appearance.



Find filtration part numbers and prices on page 34

SURGE TANKS

Surge Tanks are engineered to provide massive amounts of fuel flow reliably and consistently for racing applications

Custom surge tanks have been common in the racing industry for many years and serve the purpose of avoiding fuel starvation in high G corners and low tank levels. The DW Surge Tank Systems include the functionality of traditional surge tanks and add compact fitment, decreased noise, and increased flexibility. This has been achieved by moving both the pump and filtration functions to the inside of the surge tank and designing flexibility to allow the use of single, dual, or triple pump configurations to meet fueling needs from 200hp to 2000+hp.

Maximum Flexibility to Grow with Your Needs

The name “DeatschWerks” is synonymous with application-specific fuel system solutions. So what happens when we create a universal product? We design it with maximum flexibility, user friendliness, and tech support. The DW-Surge Tanks were developed specifically for racecars and high horsepower applications where drop-in-fitment isn’t always the best approach. Highly modified vehicles have different needs, which often require complete fuel system overhaul as opposed to working within the confines of the OE fuel system. Our surge tank systems are cost-effective in that it can grow with your build. One basic set of components can be configured to support from 500hp to over 2000hp. The system comes with all the extra parts needed for this adaptability plus we offer excellent technical documentation to help you get your system set up right the first time, every time.

Race Proven Fueling Solution

High-G cornering under full load puts more stress on a fuel delivery system than any other racing scenario. This is where the DW Surge Tanks excel. Team DW’s time attack and drift drivers have put this product to the test and have been blown away with the results. In addition to the flexibility of use and consistency of fuel supply, our drivers have made many positive comments on the weight savings, durability, and simplicity of the system.

DW Surge Tank Specifications

- Available in 2.5L, 3.5L, or 5.5L internal capacities
- Anodized for e85 and methanol compatibility
- Configurable for single, dual, triple, or external pump configurations
- Submerged pump design cools and quiets pump operation
- Vertical and horizontal mounting (integrated bracket)
- Compatible with DW250iL or DW350iL in-line pumps, 5.5L Compatible with DW200, DW300, and DW400
- Optional integrated stainless pre-filters (Inline pumps only)
- Detailed plumbing and installation instructions included



Find surge tank part numbers and prices on page 34

FUEL PRESSURE REGULATORS

DW Regulators provide the quality, precision and reliability that your high performance fuel system requires to deliver stable AFR and optimum performance

Adjustable fuel pressure regulators are simple mechanical devices that have not changed much over the decades and are often taken for granted. However, if you have ever experienced a failed diaphragm, fluctuating fuel pressure, or hot/cold start issues that inferior regulators can cause, you will appreciate the DWR1000 and DWR2000 adjustable fuel pressure regulators. Development of the DW regulators started with a comprehensive evaluation of the popular regulators already on the market. DW regulators were benchmarked against 5 of the leading regulators on the market and designed to outperform across multiple categories.

Designed with Ethanol in Mind

DW regulators were designed to be 100% compatible with ethanol based fuels. The corrosive nature of modern ethanol containing fuels will create significant issues for regulators that are not designed specifically for use in this environment. DW regulators utilize stainless steel hardware, nitrile-fiber diaphragms, anodized housings, and are, of course, 100% brass free in their construction.



Precision Pressure Adjustment

DW regulators incorporate several design features that allow precision pressure adjustment ranging from 30-100 PSI. The ball-bearing adjustment mechanism combined with a 2 psi-per-turn pressure ratio makes dialing in your desired target pressure an easy task. In addition, the massive 45mm diaphragm maintains that set pressure with unrivaled accuracy.



Full Line of Pressure Regulators to Fit All Needs

DW's adjustable regulator offering includes everything you need nothing you don't. By maximizing flexibility of bracket fitment and fuel line routing in each of our regulator models, we have created a line up consisting of just 5 models that fits virtually all needs... 200hp to 2,000hp, any fuel, EFI or Carb, -6, -8, and -10 feed lines. See the table below to find the DW regulator best for you...



DWR2000
Carb 3-20PSI
EFI 30-120PSI
-10 in, -8 out
Shown in Black

DWR1000
30-120PSI
-8 in, -6 out
Shown in Titanium

DWR1000iL
30-120PSI
-6 in, -6 out
Shown in Black

DWR1000c
30-120PSI
-6 in, -6 out
Shown in Titanium

Find regulator part numbers and prices on page 34

FUEL RAILS

DW has created a clean-sheet rail design to offer the highest flow and maximum install flexibility

When DW decided to develop a line of high flow fuel rails, the project was started with the end in mind. The goal was to create a rail to outperform the competition in flow, fitment, aesthetics, options and value. This was a tall order that could only be accomplished with a clean-sheet design. After many late night CAD sessions, test-fittings, and design revisions, the end product has been worth the wait and effort.



Fuel Rail System that Grows with Your Build

Value can be defined in many ways. The cheap option is often the most expensive in the long run. DW rails give you the opportunity to “buy right and buy once” by providing a fuel rail that can grow with your needs. Whenever possible, we designed in the following flexibilities:

- Compatibility with OE injectors and DW high flow injectors
- Fitment for OE plumbing and high flow return plumbing
- Set-ups for OE pressure regulator and adjustable aftermarket regulators

High Bore -8AN ORB

Modern engine bays are tight spaces. There is little room for error when the goal is to maintain OE fitment AND maximize bore diameter. Generic fuel rail stock with bolt-on brackets and a logo isn't going to deliver aesthetically or functionally. The DW clean-sheet design included carefully placed integrated brackets plus carefully shaped and shaved rail bodies to maximize internal cross sections. This larger diameter bore provides benefits of lower restriction, more stable pressure, less vibration, and less noise.



Options are Standard

Sometimes it is the simple yet well-planned features that make a big difference. When you focus only on fueling, you think of things the competition misses:

- 1/8" NPT port for pressure gauge or nitrous feed
- Integrated schrader valve
- 3/8" NPT port for integration of fuel pulsation damper
- Available in Black
- Hardware kit, including everything needed for installation

Conversion Rails for Side-Feeds

DW offers innovative rail/injector kits for converting Subaru side-feed applications to top-feed. Many Subaru's from the 90's and early 2000's came from the factory with side feed injectors. Modern top-feed injectors are easier to tune, less expensive, and flow more fuel than the side-feed alternatives. DW Conversion Kits include injectors ranging from 750cc to 2200cc and are engineered as a system where the injector, rails, and mounting hardware all work together to integrate flawlessly into the OE manifold.



Find fuel rail part numbers and prices on page 35

LINES & FITTINGS

DW has created the first comprehensive offering of lines and fittings created specifically for fuel system plumbing



Everything You Need, Nothing You Don't

Plumbing a fuel system has always been more difficult than it should be. Countless hours can be spent pouring through multiple vendor sites and hundreds of non-fuel-specific part numbers in search of that one specialty fitting you need. The DW plumbing line-up is designed to simplify this process by providing everything you need and nothing you don't:

- -6, -8, and -10 AN sizing covers all the feed and return options needed for 200hp to 2,000hp.
- Fuel system specific specialty parts including Check Valves, EFI Quick Connects, Hardline Adaptors, Metric Adaptors, Y-Blocks, Bulkheads, Tees, Plugs, Hose Ends, AN Couplers and Adaptors.
- Technical support standing by to help find what you need.

PTFE or Rubber – the Choice is Yours

Today's plumbing components and lines are challenged with an increasing list of available pump gases, race fuels, and ethanol blends. The DW plumbing line includes options for compatibility with all of these:

- Rubber fuel lines are reinforced for high pressure and lined for compatibility with ethanol-based fuels up to e85.
- PTFE fuel lines have increased fuel compatibility for methanol and e100. In addition, this option allows tighter radius turns and zero fuel vapor permeability.
- Both hose options are available in stainless (silver) or nylon (black) braided coverings.
- Swivel hose-end options for both rubber and PTFE in straight, 30, 45, 60, 90, 120, and 180 degrees.

Quality and Value to Fit Your Needs

Fuel system plumbing is not a place to cut corners on quality, but you should not have to pay a premium for that peace of mind. All DW plumbing components are manufactured to applicable JIC and SAE standards and are constructed of heat-treated 6061 T-6 aluminum that is hard anodized in a titanium finish. These high-grade materials and coatings offer the optimum combination of strong, light, and fuel compatible. All DW plumbing components are backed by a 3-year warranty.

Tools to Assemble Your Lines

Specialty plumbing components require specialty tools. To maximize simplicity and offer one-stop-shopping DW has created their own line of plumbing tools. The offering includes AN wrenches in sizes from -4AN to -12AN, adjustable AN wrenches, and soft vise hose-end clamps... Everything you need to assemble the fuel lines yourself.

ADDITIONAL FUELING PRODUCTS

DW accessories engineered to complement your fuel system

Injector O-Ring Kits:

DeatschWerks O-ring kits include all necessary upper O-rings, lower O-rings, and manifold spacers and seals needed for your application. With over 100 different O-rings in-stock, we have you covered for just about any style, size, shape, or material your application calls for. If you don't see what you need in a kit listed here, feel free to contact us, and we'll find what you're looking for.



Find O-ring part numbers and prices on page 38



Connectors:

DeatschWerks has several different types of connectors available, because everyone has a preference as to what types of connectors they use when upgrading their system. DW offers double-sided plug-and-play connectors (the easiest to use since they plug right in), re-pin connectors to make your system look like stock with no soldering, and pigtails that can be soldered in to your existing system. Whether you need USCAR, Sumitomo, Delphi, Honda, Jetronic, Minitimer, Nissan or Subaru connectors, we have them.



Find connector part numbers and prices on page 28

Justin Keith's "Stangkilr".
F1X ProCharged Corvette C7 capable of 1400HP.
First ever C7 equipped with a powerglide. Fueled by DW 2200cc injectors.



FUEL INJECTOR & FUEL PUMP PRICE GUIDE

By Make & Model



APPLICATION		FUEL INJECTORS				FUEL PUMPS					
Model	Year/Engine	Part #	Flow Rate	Set Qty	Price	Pump Series	Part #	Flow Rate	Price		
ACURA											
ILX	2012-2015 K24	17U-08-0440-4	440 cc/min	4	\$319						
		17U-08-0550-4	550 cc/min	4	\$319						
		17U-08-0650-4	650 cc/min	4	\$379						
		17U-08-0750-4	750 cc/min	4	\$429	DW200	9-201-1000*	255 liters/hr	\$99		
		17U-08-1000-4	1000 cc/min	4	\$449	DW300	9-301-1000*	340 liters/hr	\$169		
		16MX-03-1200-4	1200 cc/min	4	\$549						
		16M-03-1500-4	1500 cc/min	4	\$829						
		16S-06-2200-4	2200 cc/min	4	\$839						
Integra	1994-2001 All OBD I and II B, D, and H series	22S-01-0420-4	420 cc/min	4	\$329						
		22S-01-0550-4	550 cc/min	4	\$329	DW100	9-101-0846	165 Liters/hr	\$99		
		22S-01-0750-4	750 cc/min	4	\$389	DW200	9-201-0846	255 liters/hr	\$99		
		16MX-01-1200-4	1200 cc/min	4	\$549	DW300	9-301-0846	340 liters/hr	\$169		
		16M-01-1500-4	1500 cc/min	4	\$829						
		16S-04-2200-4	2200 cc/min	4	\$839						
		22S-01-0420-4	420 cc/min	4	\$329						
		22S-01-0550-4	550 cc/min	4	\$329						
Integra	1990-1993 All OBD I and II B, D, and H series	22S-01-0750-4	750 cc/min	4	\$389	DW200	9-201-1000*	255 liters/hr	\$99		
		16MX-01-1200-4	1200 cc/min	4	\$549	DW300	9-301-1000*	340 liters/hr	\$169		
		16M-01-1500-4	1500 cc/min	4	\$829						
		16S-04-2200-4	2200 cc/min	4	\$839						
		NSX	1991-1995 C30A					DW200	9-201-1000*	255 liters/hr	\$99
								DW300	9-301-1000*	340 liters/hr	\$169
		RSX	2002-2008 K20	17U-08-0440-4	440 cc/min	4	\$319				
				17U-08-0550-4	550 cc/min	4	\$319				
17U-08-0650-4	650 cc/min			4	\$379						
17U-08-0750-4	750 cc/min			4	\$429	DW65c	9-651-1009	265 liters/hr	\$149		
17U-08-1000-4	1000 cc/min			4	\$449	DW300c	9-307-1009	340 liters/hr	\$189		
16MX-03-1200-4	1200 cc/min			4	\$549						
16M-03-1500-4	1500 cc/min			4	\$829						
16S-06-2200-4	2200 cc/min			4	\$839						
TSX	2009-2014 K24	17U-08-0440-4	440 cc/min	4	\$319						
		17U-08-0550-4	550 cc/min	4	\$319						
		17U-08-0650-4	650 cc/min	4	\$379						
		17U-08-0750-4	750 cc/min	4	\$429	DW200	9-201-1000*	255 liters/hr	\$99		
		17U-08-1000-4	1000 cc/min	4	\$449	DW300	9-301-1000*	340 liters/hr	\$169		
		16MX-03-1200-4	1200 cc/min	4	\$549						
		16M-03-1500-4	1500 cc/min	4	\$829						
		16S-06-2200-4	2200 cc/min	4	\$839						
TSX	2004-2008 K24	17U-08-0440-4	440 cc/min	4	\$319						
		17U-08-0550-4	550 cc/min	4	\$319						
		17U-08-0650-4	650 cc/min	4	\$379						
		17U-08-0750-4	750 cc/min	4	\$429	DW200	9-201-1000*	255 liters/hr	\$99		
		17U-08-1000-4	1000 cc/min	4	\$449	DW300	9-301-1000*	340 liters/hr	\$169		
		16MX-03-1200-4	1200 cc/min	4	\$549						
		16M-03-1500-4	1500 cc/min	4	\$829						
		16S-06-2200-4	2200 cc/min	4	\$839						
AUDI											
A4/TT	2001-2006 1.8L turbo	17U-01-0440-4	440 cc/min	4	\$319						
		17U-01-0550-4	550 cc/min	4	\$319						
		17U-01-0650-4	650 cc/min	4	\$379						
		17U-01-0750-4	750 cc/min	4	\$389	DW65v FWD	9-654-1025	265 liters/hr	\$249		
		17U-01-1000-4	1000 cc/min	4	\$409	DW65v AWD	9-655-1025	265 liters/hr	\$249		
		16MX-30-1200-4	1200 cc/min	4	\$549						
		16M-30-1500-4	1500 cc/min	4	\$829						
		A6	2000-2004 1.8L turbo					DW65v (FWD Only)	9-654-1025	265 liters/hr	\$249

Mark Hutchison's LS Turbo E46 BMW aka The GMW

Mark's Turbo 5.3L BMW runs a full DW fuel system featuring a set of 95lb injectors, DW400 fuel pump, DWFF160 fuel filter, DWR1000 Fuel Pressure Regulator, and DW Lines and Fittings.



* Part # denotes universal fitment. Modifications to the OE assembly or use of an aftermarket hanger may be necessary. Contact DW tech support for further assistance.

FUEL INJECTOR & FUEL PUMP PRICE GUIDE By Make & Model

APPLICATION		FUEL INJECTORS				FUEL PUMPS			
Model	Year/Engine	Part #	Flow Rate	Set Qty	Price	Pump Series	Part #	Flow Rate	Price
BMW									
E30	1987-1991 2.5L M20	17U-01-0440-6	440 cc/min	6	\$469	DW65c DW300c	9-651-1030 9-307-1030	265 liters/hr 340 liters/hr	\$149 \$189
		17U-01-0550-6	550 cc/min	6	\$469				
		17U-01-0750-6	750 cc/min	6	\$619				
		17U-01-1000-6	1000 cc/min	6	\$619				
		16MX-30-1200-6	1200 cc/min	6	\$799				
		16M-30-1500-6	1500 cc/min	6	\$1,229				
E36	1992-2000 2.5L/2.8L M50 3.0L S52	17U-01-0440-6	440 cc/min	6	\$469	DW200 DW300 DW400	9-201-1031 9-301-1031 9-401-1052	255 liters/hr 340 liters/hr 415 liters/hr	\$99 \$169 \$239
		17U-01-0550-6	550 cc/min	6	\$469				
		17U-01-0750-6	750 cc/min	6	\$619				
		17U-01-1000-6	1000 cc/min	6	\$619				
		16MX-30-1200-6	1200 cc/min	6	\$799				
		16M-30-1500-6	1500 cc/min	6	\$1,229				
E46	2001-2006 2.5L/2.8 M52 3.2L S54	17U-01-0440-6	440 cc/min	6	\$469	DW200 DW300 DW400	9-201-1031 9-301-1031 9-401-1052	255 liters/hr 340 liters/hr 415 liters/hr	\$99 \$169 \$239
		17U-01-0550-6	550 cc/min	6	\$469				
		17U-01-0750-6	750 cc/min	6	\$619				
		17U-01-1000-6	1000 cc/min	6	\$619				
		16MX-30-1200-6	1200 cc/min	6	\$799				
		16M-30-1500-6	1500 cc/min	6	\$1,229				
BUICK									
Grand National/ Regal T-Type	1984-1987 3.8L Turbo	18U-01-0060-6	60 lb/hr	6	\$399	DW200 DW300 DW400	9-201-1000 9-301-1000 9-401-1001	255 liters/hr 340 liters/hr 415 liters/hr	\$99 \$169 \$239
		18U-01-0078-6	78 lb/hr	6	\$399				
		18U-01-0088-6	88 lb/hr	6	\$459				
		17U-05-0095-6	95 lb/hr	6	\$599				
		16MX-20-1200-6	1200 cc/min	6	\$799				
		16M-20-1500-6	1500 cc/min	6	\$1,229				
CADILLAC									
CTS-V	2009-2015 6.2L LSA	16U-00-0050-8	50 lb/hr	8	\$499	DW300c	9-309-1039 (x2)	340 liters/hr (incl. 2 pumps)	\$389
		16U-00-0065-8	65 lb/hr	8	\$499				
		16U-00-0090-8	90 lb/hr	8	\$669				
		16M-22-1500-8	1500 cc/min	8	\$1,549				
		16S-00-2200-8	2000 cc/min	8	\$1,529				
		2006-2007 6.0L LS2	17U-21-0042-8	42 lb/hr	8				
17U-21-0050-8	50 lb/hr		8	\$629					
17U-21-0060-8	60 lb/hr		8	\$679					
17U-21-0072-8	72 lb/hr		8	\$699					
17U-21-0095-8	95 lb/hr		8	\$699					
16MX-21-1200-8	1200 cc/min		8	\$1,029					
2004-2005 5.7L LS6	18U-01-0039-8	39 lb/hr	8	\$479	DW200 DW300	9-201-1038 9-301-1038	255 liters/hr 340 liters/hr	\$99 \$169	
	18U-01-0042-8	42 lb/hr	8	\$479					
	18U-01-0050-8	50 lb/hr	8	\$479					
	18U-01-0060-8	60 lb/hr	8	\$519					
	18U-01-0078-8	78 lb/hr	8	\$519					
	18U-01-0088-8	88 lb/hr	8	\$619					
CHEVROLET									
Camaro SS	2010-2015 6.2L LS3, 6.2L L99	16U-00-0042-8	42 lb/hr	8	\$499	DW300c	9-309-1039 (x2)	340 liters/hr (incl. 2 pumps)	\$389
		16U-00-0050-8	50 lb/hr	8	\$499				
		16U-00-0065-8	65 lb/hr	8	\$499				
		16U-00-0090-8	90 lb/hr	8	\$669				
		16MX-22-1200-8	1200 cc/min	8	\$1,029				
		16M-22-1500-8	1500 cc/min	8	\$1,549				
Camaro Z28, SS	1998-2002 5.7L LS1	18U-01-0039-8	39 lb/hr	8	\$479	DW200 DW300	9-201-1000* 9-301-1000*	255 liters/hr 340 liters/hr	\$99 \$169
		18U-01-0042-8	42 lb/hr	8	\$479				
		18U-01-0050-8	50 lb/hr	8	\$479				
		18U-01-0060-8	60 lb/hr	8	\$519				
		18U-01-0078-8	78 lb/hr	8	\$519				
		18U-01-0088-8	88 lb/hr	8	\$619				
17U-05-0095-8	95 lb/hr	8	\$699						
16MX-20-1200-8	1200 cc/min	8	\$1,029						
16M-20-1500-8	1500 cc/min	8	\$1,549						
16S-13-2200-8	2200 cc/min	8	\$1,529						

* Part # denotes universal fitment. Modifications to the OE assembly or use of an aftermarket hanger may be necessary. Contact DW tech support for further assistance.

FUEL INJECTOR & FUEL PUMP PRICE GUIDE By Make & Model

APPLICATION		FUEL INJECTORS				FUEL PUMPS			
Model	Year/Engine	Part #	Flow Rate	Set Qty	Price	Pump Series	Part #	Flow Rate	Price
Corvette	2008-2013 6.2L LS3	16U-00-0042-8	42 lb/hr	8	\$499	DW400	9-402-1048	415 liters/hr	\$239
		16U-00-0050-8	50 lb/hr	8	\$499				
		16U-00-0065-8	65 lb/hr	8	\$499				
		16U-00-0090-8	90 lb/hr	8	\$669				
		16MX-22-1200-8	1200 cc/min	8	\$1,029				
		16M-22-1500-8	1500 cc/min	8	\$1,549				
	16S-00-2200-8	2200 cc/min	8	\$1,529					
	2005-2007 6.0L LS2	17U-21-0042-8	42 lb/hr	8	\$619	DW400	9-402-1048	415 liters/hr	\$239
		17U-21-0050-8	50 lb/hr	8	\$629				
		17U-21-0060-8	60 lb/hr	8	\$679				
		17U-21-0072-8	72 lb/hr	8	\$699				
		17U-21-0095-8	95 lb/hr	8	\$699				
		16MX-21-1200-8	1200 cc/min	8	\$1,029				
	16M-21-1500-8	1500 cc/min	8	\$1,549					
	16S-12-2200-8	2200 cc/min	8	\$1,529					
	1997-2004 5.7L LS1	18U-01-0039-8	39 lb/hr	8	\$479	DW200 DW300	9-201-1000* 9-301-1000*	255 liters/hr 340 liters/hr	\$99 \$169
		18U-01-0042-8	42 lb/hr	8	\$479				
		18U-01-0050-8	50 lb/hr	8	\$479				
		18U-01-0060-8	60 lb/hr	8	\$519				
		18U-01-0078-8	78 lb/hr	8	\$519				
		18U-01-0088-8	88 lb/hr	8	\$619				
	17U-05-0095-8	95 lb/hr	8	\$699					
	16MX-20-1200-8	1200 cc/min	8	\$1,029					
	16M-20-1500-8	1500 cc/min	8	\$1,549					
16S-13-2200-8	2200 cc/min	8	\$1,529						
Corvette Z06	2006-2013 7.0L LS7	16U-00-0042-8	42 lb/hr	8	\$499	DW400	9-402-1048	415 liters/hr	\$239
		16U-00-0050-8	50 lb/hr	8	\$499				
		16U-00-0065-8	65 lb/hr	8	\$499				
		16U-00-0090-8	90 lb/hr	8	\$669				
		16MX-22-1200-8	1200 cc/min	8	\$1,029				
		16M-22-1500-8	1500 cc/min	8	\$1,549				
16S-00-2200-8	2200 cc/min	8	\$1,529						
Corvette Z06	2001-2004 5.7L LS6	18U-01-0039-8	39 lb/hr	8	\$479	DW400	9-402-1048	415 liters/hr	\$239
		18U-01-0042-8	42 lb/hr	8	\$479				
		18U-01-0050-8	50 lb/hr	8	\$479				
		18U-01-0060-8	60 lb/hr	8	\$519				
		18U-01-0078-8	78 lb/hr	8	\$519				
		18U-01-0088-8	88 lb/hr	8	\$619				
17U-05-0095-8	95 lb/hr	8	\$699						
16MX-20-1200-8	1200 cc/min	8	\$1,029						
16M-20-1500-8	1500 cc/min	8	\$1,549						
16S-13-2200-8	2200 cc/min	8	\$1,529						
Corvette ZR-1	2009-2013 6.2L LS9	16U-00-0050-8	50 lb/hr	8	\$499	DW400	9-402-1048	415 liters/hr	\$239
		16U-00-0065-8	65 lb/hr	8	\$499				
		16U-00-0090-8	90 lb/hr	8	\$669				
		16MX-22-1200-8	1200 cc/min	8	\$1,029				
		16M-22-1500-8	1500 cc/min	8	\$1,549				
		16S-00-2200-8	2200 cc/min	8	\$1,529				
2014-2018 5.3 & 6.2 V8						DW400 Module	9-401-7014	415 liters/hr	\$649
	2005-2013 4.8, 5.3, 6.0, 6.2 V8	35U-00-0056-8	56 lb/hr	8	\$599	DW400 Module	9-401-603-7012 9-401-603-7013	415 liters/hr 415 liters/hr	\$1099 \$1149
35U-00-0072-8		72 lb/hr	8	\$599					
17U-26-0095-8		95 lb/hr	8	\$699					
16MX-26-1200-8		1200 cc/min	8	\$1029					
16M-26-1500-8		1500 cc/min	8	\$1549					
16S-26-2200-8		2200 cc/min	8	\$1529					
1999-2004 4.8L, 5.3L, 6.0L V8 (excl flex fuel)	35U-01-0044-8	44 lb/hr	8	\$429	DW400 Module	9-401-603-7010 9-401-603-7011	415 liters/hr 415 liters/hr	\$1099 \$1149	
	35U-01-0060-8	60 lb/hr	8	\$469					
	35U-01-0072-8	72 lb/hr	8	\$599					
	17U-26-0095-8	95 lb/hr	8	\$699					
	16MX-26-1200-8	1200 cc/min	8	\$1029					
	16M-26-1500-8	1500 cc/min	8	\$1549					
16S-26-2200-8	2200 cc/min	8	\$1529						
Trailblazer SS	2005-2009 6.2L LS2	17U-21-0042-8	42 lb/hr	8	\$619				
		17U-21-0050-8	50 lb/hr	8	\$629				
		17U-21-0060-8	60 lb/hr	8	\$679				
		17U-21-0072-8	72 lb/hr	8	\$699				
		17U-21-0095-8	95 lb/hr	8	\$699				

* Part # denotes universal fitment. Modifications to the OE assembly or use of an aftermarket hanger may be necessary. Contact DW tech support for further assistance.

APPLICATION		FUEL INJECTORS				FUEL PUMPS			
Model	Year/Engine	Part #	Flow Rate	Set Qty	Price	Pump Series	Part #	Flow Rate	Price
DODGE									
Caliber (SRT4)	2008-2009 A853	17U-14-0650-4	650 cc/min	4	\$349	DW200 DW300	9-201-1000* 9-301-1000*	255 liters/hr 340 liters/hr	\$99 \$169
		17U-14-0750-4	750 cc/min	4	\$389				
		17U-00-0095-4	1000 cc/min	4	\$389				
		16MX-21-1200-4	1200 cc/min	4	\$549				
		16M-21-1500-4	1500 cc/min	4	\$829				
		16S-06-2200-4	2200 cc/min	4	\$839				
Challenger RT	2006-2017 V8 Hemi 5.7 (EZB, EZD)	17U-00-0050-8	50 lb/hr	8	\$629	DW200 DW300	9-201-1000* 9-301-1000*	255 liters/hr 340 liters/hr	\$99 \$169
		17U-00-0060-8	60 lb/hr	8	\$679				
		17U-00-0072-8	72 lb/hr	8	\$699				
		17U-00-0095-8	95 lb/hr	8	\$699				
		16MX-21-1200-8	1200 cc/min	8	\$1,029				
		16M-21-1500-8	1500 cc/min	8	\$1,549				
Challenger SRT8	2008-2017 V8 Hemi 6.1/ 6.4 (ESF)	17U-00-0050-8	50 lb/hr	8	\$629	DW200 DW300	9-201-1000* 9-301-1000*	255 liters/hr 340 liters/hr	\$99 \$169
		17U-00-0060-8	60 lb/hr	8	\$679				
		17U-00-0072-8	72 lb/hr	8	\$699				
		17U-00-0095-8	95 lb/hr	8	\$699				
		16MX-21-1200-8	1200 cc/min	8	\$1,029				
		16M-21-1500-8	1500 cc/min	8	\$1,549				
Challenger Hellcat	2015-2017 SC V8 Hemi 6.2	17MX-03-0850-8	850 cc/min	8	\$749				
		17MX-03-1100-8	1100 cc/min	8	\$799				
Challenger Demon	2018 SC V8 Hemi 6.2	17MX-03-0850-8	850 cc/min	8	\$749				
		17MX-03-1100-8	1100 cc/min	8	\$799				
Charger RT	2006-2017 V8 Hemi 5.7 (EZB, EZD)	17U-00-0050-8	50 lb/hr	8	\$629	DW200 DW300	9-201-1000* 9-301-1000*	255 liters/hr 340 liters/hr	\$99 \$169
		17U-00-0060-8	60 lb/hr	8	\$679				
		17U-00-0072-8	72 lb/hr	8	\$699				
		17U-00-0095-8	95 lb/hr	8	\$699				
		16MX-21-1200-8	1200 cc/min	8	\$1,029				
		16M-21-1500-8	1500 cc/min	8	\$1,549				
Charger SRT8	2006-2017 V8 Hemi 6.1/ 6.4 (ESF)	17U-00-0050-8	50 lb/hr	8	\$629	DW200 DW300	9-201-1000* 9-301-1000*	255 liters/hr 340 liters/hr	\$99 \$169
		17U-00-0060-8	60 lb/hr	8	\$679				
		17U-00-0072-8	72 lb/hr	8	\$699				
		17U-00-0095-8	95 lb/hr	8	\$699				
		16MX-21-1200-8	1200 cc/min	8	\$1,029				
		16M-21-1500-8	1500 cc/min	8	\$1,549				
Charger Hellcat	2015-2017 SC V8 Hemi 6.2	17MX-03-0850-8	850 cc/min	8	\$749				
		17MX-03-1100-8	1100 cc/min	8	\$799				
Neon (SRT-4)	2003-2005 A853	17U-14-0650-4	650 cc/min	4	\$349	DW200 DW300	9-201-1000* 9-301-1000*	255 liters/hr 340 liters/hr	\$99 \$169
		17U-14-0750-4	750 cc/min	4	\$389				
		17U-00-0095-4	1000 cc/min	4	\$389				
		16MX-21-1200-4	1200 cc/min	4	\$549				
		16M-21-1500-4	1500 cc/min	4	\$829				
		16S-06-2200-4	2200 cc/min	4	\$839				
Ram (1500, 2500)	2003-2015 V8 Hemi 5.7	17U-00-0050-8	50 lb/hr	8	\$629	DW200 DW300	9-201-1000* 9-301-1000*	255 liters/hr 340 liters/hr	\$99 \$169
		17U-00-0060-8	60 lb/hr	8	\$679				
		17U-00-0072-8	72 lb/hr	8	\$699				
		17U-00-0095-8	95 lb/hr	8	\$699				
		16MX-21-1200-8	1200 cc/min	8	\$1,029				
		16M-21-1500-8	1500 cc/min	8	\$1,549				
Stealth	1991-1996 3.0L - 3.0TT	42M-02-0550-6	550 cc/min	6	\$449	DW200 DW300	9-201-1000* 9-301-1000*	255 liters/hr 340 liters/hr	\$99 \$169
		42M-02-0800-6	800 cc/min	6	\$509				
		42M-02-1000-6	1000 cc/min	6	\$549				
		42M-02-1200-6	1200 cc/min	6	\$569				
Viper	1992-2010 8.0L and 8.3L V10	16U-03-0042-10	42 lb/hr	10	\$669	DW200 DW300	9-201-1000* 9-301-1000*	255 liters/hr 340 liters/hr	\$99 \$169
		16U-03-0050-10	50 lb/hr	10	\$669				
		16U-03-0065-10	65 lb/hr	10	\$669				
		16U-03-0090-10	90 lb/hr	10	\$899				
		16MX-22-1200-10	1200 cc/min	10	\$1,289				
		2012-2017 8.4L V-10	16MX-22-1200-10	1200 cc/min	10				

Justin Keith's Jeep Track Hawk

Justin Keith's 900hp Hellcat power Jeep Trackhawk uses a set of 1500cc DeatschWerks injectors and powers this full sized SUV down the quarter mile in the low 10s.



* Part # denotes universal fitment. Modifications to the OE assembly or use of an aftermarket hanger may be necessary. Contact DW tech support for further assistance.

FUEL INJECTOR & FUEL PUMP PRICE GUIDE By Make & Model

APPLICATION		FUEL INJECTORS				FUEL PUMPS				
Model	Year/Engine	Part #	Flow Rate	Set Qty	Price	Pump Series	Part #	Flow Rate	Price	
FORD										
F-Series (150/250)	1997-2017 4.6L, 5.0L, 5.4L, 6.2L V8 (incl flex fuel)	18U-01-0039-8	39 lb/hr	8	\$479					
		18U-01-0042-8	42 lb/hr	8	\$479					
		18U-01-0050-8	50 lb/hr	8	\$479					
		18U-01-0060-8	60 lb/hr	8	\$519					
		18U-01-0078-8	78 lb/hr	8	\$519	DW300m	9-305-1037	340 liters/hr	\$169	
		18U-01-0088-8	88 lb/hr	8	\$619					
		17U-05-0095-8	95 lb/hr	8	\$699					
		16MX-20-1200-8	1200 cc/min	8	\$1,029					
		16M-20-1500-8	1500 cc/min	8	\$1,549					
16S-13-2200-8	2000 cc/min	8	\$1,529							
F-Series (EcoBoost)	2011-2015 3.5L EcoBoost	19S-00-1700-6	1700cc/min	6	\$989					
	2016 2.3L EcoBoost	19S-01-1700-4	1700cc/min	4	\$679					
Focus RS	2009-2011 I5	17U-00-0550-5	550 cc/min	5	\$449					
		17U-00-0650-5	650 cc/min	5	\$459	DW65c	9-651-1017	265 liters/hr	\$149	
		17U-00-0750-5	750 cc/min	5	\$489	DW300c	9-307-1017	340 liters/hr	\$189	
		17U-00-1000-5	1000 cc/min	5	\$489					
Focus ST	2013-2016 2.0L EcoBoost	19S-01-1700-4	1700cc/min	4	\$639					
	2005-2010 I5 (euro)	17U-00-0550-5	550 cc/min	5	\$449					
		17U-00-0650-5	650 cc/min	5	\$459					
		17U-00-0750-5	750 cc/min	5	\$489					
17U-00-1000-5	1000 cc/min	5	\$489							
Mustang GT	2018 5.0L Direct Inj.	19S-02-1700-8	1700 cc/min	8	\$1,299					
	2011-2018 4.6L, 5.0L V8 Port Injection	18U-00-0035-8	35 lb/hr	8	\$479					
		18U-00-0039-8	39 lb/hr	8	\$479					
		18U-00-0042-8	42 lb/hr	8	\$479					
		18U-00-0050-8	50 lb/hr	8	\$479	DW400	9-403-1046 (11-14)	415 liters/hr	\$259	
		18U-00-0060-8	60 lb/hr	8	\$519					
		18U-00-0078-8	78 lb/hr	8	\$519	DW400	9-403-1047 (15-17)	415 liters/hr	\$279	
		18U-00-0088-8	88 lb/hr	8	\$599					
		17U-04-0095-8	95 lb/hr	8	\$699					
		16MX-23-1200-8	1200 cc/min	8	\$1,029					
	16M-23-1500-8	1500 cc/min	8	\$1,549						
	16S-13-2200-8	2000 cc/min	8	\$1,529						
	2005-2010 4.6L, 5.0L V8	18U-00-0035-8	35 lb/hr	8	\$479					
18U-00-0039-8		39 lb/hr	8	\$479						
18U-00-0042-8		42 lb/hr	8	\$479						
18U-00-0050-8		50 lb/hr	8	\$479						
18U-00-0060-8		60 lb/hr	8	\$519	DW300m	9-305-1034	340 liters/hr	\$169		
18U-00-0078-8		78 lb/hr	8	\$519	DW400	9-401-1045	415 liters/hr	\$239		
18U-00-0088-8		88 lb/hr	8	\$599						
17U-04-0095-8		95 lb/hr	8	\$699						
16MX-23-1200-8		1200 cc/min	8	\$1,029						
16M-23-1500-8	1500 cc/min	8	\$1,549							
16S-13-2200-8	2000 cc/min	8	\$1,529							
Mustang GT	1999-2004 4.6L, 5.0L V8	18U-01-0039-8	39 lb/hr	8	\$479					
		18U-01-0042-8	42 lb/hr	8	\$479					
		18U-01-0050-8	50 lb/hr	8	\$479					
		18U-01-0060-8	60 lb/hr	8	\$519					
		18U-01-0078-8	78 lb/hr	8	\$519	DW300m	9-305-1032	340 liters/hr	\$169	
		18U-01-0088-8	88 lb/hr	8	\$619					
		17U-05-0095-8	95 lb/hr	8	\$699					
		16MX-20-1200-8	1200 cc/min	8	\$1,029					
		16M-20-1500-8	1500 cc/min	8	\$1,549					
		16S-13-2200-8	2000 cc/min	8	\$1,529					
		1985-1997 4.6L, 5.0L V8	18U-01-0039-8	39 lb/hr	8	\$479				
			18U-01-0042-8	42 lb/hr	8	\$479				
			18U-01-0050-8	50 lb/hr	8	\$479				
18U-01-0060-8	60 lb/hr		8	\$519	DW200	9-201-1014	255 liters/hr	\$99		
18U-01-0078-8	78 lb/hr		8	\$519	DW300	9-301-1014	340 liters/hr	\$169		
18U-01-0088-8	88 lb/hr		8	\$619	DW400	9-401-1044	415 liters/hr	\$239		
17U-05-0095-8	95 lb/hr		8	\$699						
16MX-20-1200-8	1200 cc/min		8	\$1,029						
16M-20-1500-8	1500 cc/min		8	\$1,549						
16S-13-2200-8	2000 cc/min	8	\$1,529							

* Part # denotes universal fitment. Modifications to the OE assembly or use of an aftermarket hanger may be necessary. Contact DW tech support for further assistance.

APPLICATION		FUEL INJECTORS				FUEL PUMPS			
Model	Year/Engine	Part #	Flow Rate	Set Qty	Price	Pump Series	Part #	Flow Rate	Price
Mustang	2011-2015 V6	16U-00-0042-6	42 lb/hr	6	\$379				
		16U-00-0050-6	50 lb/hr	6	\$379	DW200	9-201-1000*	255 liters/hr	\$99
		16U-00-0065-6	65 lb/hr	6	\$379	DW300	9-301-1000	340 liters/hr	\$169
		16U-00-0090-6	90 lb/hr	6	\$499	DW400	9-401-1046	415 liters/hr	\$259
		16M-22-1500-6	1500 cc/min	6	\$1,229				
		17U-00-0060-6	60 lb/hr	6	\$539				
	2005-2010 V6	17U-00-0072-6	72 lb/hr	6	\$559				
		17U-00-0095-6	95 lb/hr	6	\$559	DW300m	9-305-1034	340 liters/hr	\$169
		16MX-21-1200-6	1200 cc/min	6	\$772	DW400	9-401-1045	415 liters/hr	\$239
		16M-21-1500-6	1500 cc/min	6	\$1,229				
		16S-12-2200-6	2200 cc/min	6	\$1,199				
		18U-00-0035-6	35 lb/hr	6	\$379				
	1999-2004 V6	18U-00-0039-6	39 lb/hr	6	\$379				
		18U-00-0042-6	42 lb/hr	6	\$379				
		18U-00-0050-6	50 lb/hr	6	\$379				
		18U-00-0060-6	60 lb/hr	6	\$399	DW300m	9-305-1032	340 liters/hr	\$169
		18U-00-0078-6	78 lb/hr	6	\$399				
		18U-00-0088-6	88 lb/hr	6	\$459				
16MX-20-1200-6		1200 cc/min	6	\$799					
16M-20-1500-6		1500 cc/min	6	\$1,229					
18U-00-0050-8		50 lb/hr	8	\$479					
18U-00-0060-8		60 lb/hr	8	\$519					
SVT Mustang Cobra	2003-2004 4.6L	18U-00-0078-8	78 lb/hr	8	\$519				
		18U-00-0088-8	88 lb/hr	8	\$599	DW300c	9-307-1033	340 liters/hr	\$369
		17U-04-0095-8	95 lb/hr	8	\$699	DW400	9-401-1044	415 liters/hr	\$239
		16MX-23-1200-8	1200 cc/min	8	\$1,029				
		16M-23-1500-8	1500 cc/min	8	\$1,549				
		16S-13-2200-8	2200 cc/min	8	\$1,529				
		17U-00-0060-8	60 lb/hr	8	\$679				
		17U-00-0072-8	72 lb/hr	8	\$699				
Mustang GT500 (incl Shelby and KR)	2007-2010 5.4L V8	17U-00-0095-8	95 lb/hr	8	\$699				
		16MX-21-1200-8	1200 cc/min	8	\$1,029	DW300m	9-305-1035 (x2)	340 liters/hr	\$339
		16M-21-1500-8	1500 cc/min	8	\$1,549				
		16S-12-2200-8	2000 cc/min	8	\$1,529				
		18U-00-0035-8	35 lb/hr	8	\$479				
		18U-00-0039-8	39 lb/hr	8	\$479				
Mustang GT350	2017-2018 5.2L V8	18U-00-0042-8	42 lb/hr	8	\$479				
		18U-00-0050-8	50 lb/hr	8	\$479				
		18U-00-0060-8	60 lb/hr	8	\$519				
		18U-00-0078-8	78 lb/hr	8	\$519				
		18U-00-0088-8	88 lb/hr	8	\$599				
		16MX-23-1200-8	1200 cc/min	8	\$1,029				
		16M-23-1500-8	1500 cc/min	8	\$1,549				
		16S-13-2200-8	2200 cc/min	8	\$1,529				
EcoBoost Mustang	2016 2.3L EcoBoost	19S-01-1700-4	1700cc/min	4	\$679				
SVT Lightning	1999-2004 5.4L	18U-01-0050-8	50 lb/hr	8	\$479				
		18U-01-0060-8	60 lb/hr	8	\$519	DW65c	9-651-1013	265 liters/hr	\$298
		18U-01-0078-8	78 lb/hr	8	\$519		(not 1999-2001)	(Incl. 2 pumps)	
		18U-01-0088-8	88 lb/hr	8	\$619	DW300c	9-307-1013	340 liters/hr	\$369
		17U-05-0095-8	95 lb/hr	8	\$699		(not 1999-2001)	(Incl. 2 pumps)	
		16MX-20-1200-8	1200 cc/min	8	\$1,029	DW400	9-401-1049	415 liters/hr	\$478
		16M-20-1500-8	1500 cc/min	8	\$1,549			(Incl. 2 pumps)	
		16S-13-2200-8	2200 cc/min	8	\$1,529				
F-150 Harley- Davidson Edition	2002-2003 5.4L					DW65c	9-651-1013	265 liters/hr	\$298
						DW300c	9-307-1013	340 liters/hr	\$369
SVT Raptor	2009-2016 5.4L 6.2L	18U-00-0042-8	42 lb/hr	8	\$479				
		18U-00-0050-8	50 lb/hr	8	\$479				
		18U-00-0060-8	60 lb/hr	8	\$519				
		18U-00-0078-8	78 lb/hr	8	\$519	DW200	9-201-1000*	255 liters/hr	\$99
		18U-00-0088-8	88 lb/hr	8	\$589	DW300	9-301-1000*	340 liters/hr	\$169
		17U-04-0095-8	95 lb/hr	8	\$699				
		16MX-23-1200-8	1200 cc/min	8	\$1,029				
		16M-23-1500-8	1500 cc/min	8	\$1,549				
	16S-13-2200-8	2000 cc/min	8	\$1,529					
	2017-2018 3.5L EcoBoost	19S-02-1700-6	1700 cc/min	6	\$989				
Taurus SHO	2010-18 3.5L EcoBoost	19S-02-1700-6	1700 cc/min	6	\$989	DW300c	9-307-1026	340 liters/hr	\$189

* Part # denotes universal fitment. Modifications to the OE assembly or use of an aftermarket hanger may be necessary. Contact DW tech support for further assistance.

FUEL INJECTOR & FUEL PUMP PRICE GUIDE By Make & Model

APPLICATION		FUEL INJECTORS				FUEL PUMPS				
Model	Year/Engine	Part #	Flow Rate	Set Qty	Price	Pump Series	Part #	Flow Rate	Price	
HONDA										
S2000	2006-2009 F22	21U-01-0450-4	450 cc/min	4	\$339					
		21U-01-0600-4	600 cc/min	4	\$339					
		21U-01-0800-4	800 cc/min	4	\$389	DW100	9-101s-1004	165 Liters/hr	\$99	
		17U-08-1000-4	1000 cc/min	4	\$449	DW200	9-201s-1004	255 liters/hr	\$99	
		16MX-03-1200-4	1200 cc/min	4	\$549	DW300	9-301s-1004	340 liters/hr	\$169	
		16M-03-1500-4	1500 cc/min	4	\$829					
			16S-06-2200-4	2200 cc/min	4	\$839				
	1999-2005 F20 F22	17U-09-0440-4	440 cc/min	4	\$349					
		17U-09-0650-4	650 cc/min	4	\$349					
		17U-09-0750-4	750 cc/min	4	\$389	DW200	9-201-1000	255 liters/hr	\$99	
		17U-09-1000-4	1000 cc/min	4	\$449	DW300	9-301-1000	340 liters/hr	\$169	
		16MX-03-1200-4	1200 cc/min	4	\$549					
		16M-03-1500-4	1500 cc/min	4	\$799					
			16S-02-2200-4	2200 cc/min	4	\$839				
	2009-2011 R18	21U-01-0450-4	450 cc/min	4	\$339	DW100	9-101-1007	165 Liters/hr	\$99	
		21U-01-0600-4	600 cc/min	4	\$339	DW200	9-201-1007	255 liters/hr	\$99	
		21U-01-0800-4	800 cc/min	4	\$389	DW300	9-301-1007	340 liters/hr	\$169	
		2006-2008 R18	13U-01-0450-4	450 cc/min	4	\$319	DW100	9-101s-1007	165 Liters/hr	\$99
		13U-01-0525-4	525 cc/min	4	\$319	DW200	9-201-1007	255 liters/hr	\$99	
						DW300	9-301-1007	340 liters/hr	\$169	
2001-2005 D17	13U-01-0450-4	450 cc/min	4	\$319	DW65c	9-651-1009	265 liters/hr	\$149		
	13U-01-0525-4	525 cc/min	4	\$319	DW300c	9-307-1009	340 liters/hr	\$189		
	1992-2000 All OBD I and II B, D, and H series	22S-01-0420-4	420 cc/min	4	\$329					
		22S-01-0550-4	550 cc/min	4	\$329	DW100	9-101-0846	165 Liters/hr	\$99	
		22S-01-0750-4	750 cc/min	4	\$389	DW200	9-201-0846	255 liters/hr	\$99	
		16MX-01-1200-4	1200 cc/min	4	\$549	DW300w	9-301-0846	340 liters/hr	\$169	
16M-01-1500-4		1500 cc/min	4	\$829						
16S-04-2200-4		2200 cc/min	4	\$839						
2012-2015 K24	17U-08-0440-4	440 cc/min	4	\$319						
	17U-08-0550-4	550 cc/min	4	\$319						
	17U-08-0650-4	650 cc/min	4	\$379						
	17U-08-0750-4	750 cc/min	4	\$429	DW65c	9-651-1008	265 liters/hr	\$149		
	17U-08-1000-4	1000 cc/min	4	\$449	DW300c	9-307-1008	340 liters/hr	\$189		
	16MX-03-1200-4	1200 cc/min	4	\$549						
2006-2011 K20	16M-03-1500-4	1500 cc/min	4	\$829						
	16S-06-2200-4	2200 cc/min	4	\$839						
	17U-08-0440-4	440 cc/min	4	\$319						
	17U-08-0550-4	550 cc/min	4	\$319						
	17U-08-0650-4	650 cc/min	4	\$379						
	17U-08-0750-4	750 cc/min	4	\$429	DW65c	9-651-1008	265 liters/hr	\$149		
2001-2005 K20	17U-08-1000-4	1000 cc/min	4	\$449	DW300c	9-307-1008	340 liters/hr	\$189		
	16MX-03-1200-4	1200 cc/min	4	\$549						
	16M-03-1500-4	1500 cc/min	4	\$829						
	16S-06-2200-4	2200 cc/min	4	\$839						
	17U-08-0440-4	440 cc/min	4	\$319						
	17U-08-0550-4	550 cc/min	4	\$319						
2011-2015 1.5L LEA	17U-08-0650-4	650 cc/min	4	\$379						
	17U-08-0750-4	750 cc/min	4	\$429	DW200	9-201-1000*	255 liters/hr	\$99		
	17U-08-1000-4	1000 cc/min	4	\$449	DW300	9-301-1000*	340 liters/hr	\$169		
	16MX-03-1200-4	1200 cc/min	4	\$549						
	16M-03-1500-4	1500 cc/min	4	\$829						
	16S-06-2200-4	2200 cc/min	4	\$839						
CRZ	21U-01-0450-4	450 cc/min	4	\$339						
	21U-01-0600-4	600 cc/min	4	\$339						
	21U-01-0800-4	800 cc/min	4	\$389	DW200	9-201-1000*	255 liters/hr	\$99		
	17U-08-1000-4	1000 cc/min	4	\$449	DW300	9-301-1000*	340 liters/hr	\$169		
	16MX-03-1200-4	1200 cc/min	4	\$549						
	16M-03-1500-4	1500 cc/min	4	\$829						
HYUNDAI										
Genesis Coupe	2009-2012 2.0T	21S-06-0550-4	550 cc/min	4	\$349					
		17U-06-0750-4	750 cc/min	4	\$419					
		17U-06-1000-4	1000 cc/min	4	\$419	DW200	9-201s-1003	255 liters/hr	\$99	
		16MX-06-1200-4	1200 cc/min	4	\$549	DW300	9-301s-1003	340 liters/hr	\$169	
	2009-2012 3.8 V6	16M-06-1500-4	1500 cc/min	4	\$829					
		35U-00-0600-6	600 cc/min	6	\$499	DW200	9-201s-1003	255 liters/hr	\$99	
	2013-14 2.0T	35U-00-0800-6	800 cc/min	6	\$499	DW300	9-301s-1003	340 liters/hr	\$169	
		18U-06-0800-4	800 cc/min	4	\$329					
			18U-06-1000-4	1000 cc/min	4	\$369				

* Part # denotes universal fitment. Modifications to the OE assembly or use of an aftermarket hanger may be necessary. Contact DW tech support for further assistance.

APPLICATION		FUEL INJECTORS				FUEL PUMPS			
Model	Year/Engine	Part #	Flow Rate	Set Qty	Price	Pump Series	Part #	Flow Rate	Price
INFINITI									
G35	2003-2008 VQ35DE, VQ35HR	21S-05-0440-6	440 cc/min	6	\$479				
		21S-05-0600-6	600 cc/min	6	\$569				
		17U-06-1000-6	1000 cc/min	6	\$619	DW200	9-201s-1005	255 liters/hr	\$99
		16MX-06-1200-6	1200 cc/min	6	\$799	DW300	9-301s-1005	340 liters/hr	\$169
		16M-06-1500-6	1500 cc/min	6	\$1,229				
		16S-05-2200-6	2200 cc/min	6	\$1,199				
G37	2009-2014 VQ37VHR	21S-05-0440-6	440 cc/min	6	\$479				
		21S-05-0600-6	600 cc/min	6	\$569				
		17U-06-1000-6	1000 cc/min	6	\$619	DW200	9-201-1020	255 liters/hr	\$99
		16MX-06-1200-6	1200 cc/min	6	\$799	DW300	9-301-1020	340 liters/hr	\$169
		16M-06-1500-6	1500 cc/min	6	\$1,229				
		16S-05-2200-6	2200 cc/min	6	\$1,199				
Q45	1991-1999 (VH45DE and VH41DE)	01J-00-0370-8	370 cc/min	8	\$689	DW200	9-201-0766	255 liters/hr	\$99
						DW300	9-301-0766	340 liters/hr	\$169
Jeep									
	1997-1998 4.0L L6	18U-01-0440-6	440 cc/min	6	\$429				
		18U-01-0550-6	550 cc/min	6	\$429	DW65c	9-651-1051	265 Liters/hr	\$149
		18U-01-0650-6	650 cc/min	6	\$429				
	1997-2002 2.5L L4	18U-01-0800-6	800 cc/min	6	\$439				
		18U-01-0440-4	440 cc/min	4	\$349				
		18U-01-0650-4	650 cc/min	4	\$349	DW65c	9-651-1051	265 Liters/hr	\$149
2003-2006 2.4L L4	18U-01-0900-4	900 cc/min	4	\$389					
	17U-00-0050-4	50 lb/hr	4	\$359					
	17U-00-0060-4	60 lb/hr	4	\$379	DW65c	9-651-1051	265 Liters/hr	\$149	
	17U-00-0072-4	72 lb/hr	4	\$389					
	17U-00-0095-4	95 lb/hr	4	\$389					
	1999-2006 4.0L L6	18U-00-0035-6	35 lb/hr	6	\$379				
18U-00-0039-6		39 lb/hr	6	\$379					
18U-00-0042-6		42 lb/hr	6	\$379					
18U-00-0050-6		50 lb/hr	6	\$379	DW65c	9-651-1051	265 Liters/hr	\$149	
18U-00-0060-6		60 lb/hr	6	\$399					
18U-00-0078-6		78 lb/hr	6	\$399					
2007-2011 3.8L V6	18U-00-0088-6	88 lb/hr	6	\$459					
	18U-00-0035-6	35 lb/hr	6	\$379					
	18U-00-0039-6	39 lb/hr	6	\$379					
	18U-00-0042-6	42 lb/hr	6	\$379	DW65c	9-651-1026	265 Liters/hr	\$149	
	18U-00-0050-6	50 lb/hr	6	\$379	DW300c	9-307-1026	340 Liters/hr	\$189	
	18U-00-0060-6	60 lb/hr	6	\$399					
2012-2017 3.6L V6	18U-00-0078-6	78 lb/hr	6	\$399					
	18U-00-0088-6	88 lb/hr	6	\$459					
	16U-00-0042-6	42 lb/hr	6	\$379					
	16U-00-0050-6	50 lb/hr	6	\$379	DW65c	9-651-1026	265 Liters/hr	\$149	
	16U-00-0065-6	65 lb/hr	6	\$379	DW300c	9-307-1026	340 Liters/hr	\$189	
	16U-00-0090-6	90 lb/hr	6	\$499					
K IA									
Forte	2010-2013 2.0L 2.4L	18U-03-0440-4	440 cc/min	4	\$349				
		18U-03-0550-4	550 cc/min	4	\$349	DW100	9-101s-1003	165 Liters/hr	\$99
		18U-03-0650-4	650 cc/min	4	\$349	DW200	9-201s-1003	255 liters/hr	\$99
		18U-03-0800-4	800 cc/min	4	\$349	DW300	9-301s-1003	340 liters/hr	\$169
		18U-03-0900-4	900 cc/min	4	\$389				
LEXUS									
IS300	2001-2005 2JZ-GE	22S-03-0420-6	420 cc/min	6	\$479				
		22S-03-0550-6	550 cc/min	6	\$479				
		22S-03-0700-6	700 cc/min	6	\$479	DW200	9-201-1000*	255 liters/hr	\$99
		16MX-12-1200-6	1200 cc/min	6	\$799	DW300	9-301-1000*	340 liters/hr	\$169
		16M-12-1500-6	1500 cc/min	6	\$1,229				
LOTUS									
Elise	1996-2011 1.8L 1ZZ/2ZZ	18U-11-0440-4	440 cc/min	4	\$349				
		18U-11-0550-4	550 cc/min	4	\$349	DW65c	9-652-1006	265 liters/hr	\$149
		18U-11-0650-4	650 cc/min	4	\$349	DW300c	9-309-1006	340 liters/hr	\$189
	2.4L 2AZFE	18U-11-0800-4	800 cc/min	4	\$379				
		18U-11-1000-4	1000 cc/min	4	\$449				
		16MX-13-1200-4	1200 cc/min	4	\$549	DW200	9-201-1000*	255 liters/hr	\$99
Exige	2000-2011 1.8L 2ZZ	16M-13-1500-4	1500 cc/min	4	\$829	DW300	9-301-1000*	340 liters/hr	\$169
		18U-11-0440-4	440 cc/min	4	\$349				
		18U-11-0550-4	550 cc/min	4	\$349	DW65c	9-652-1006	265 liters/hr	\$149
	2.4L 2AZFE	18U-11-0650-4	650 cc/min	4	\$349	DW300c	9-309-1006	340 liters/hr	\$189
		18U-11-0800-4	800 cc/min	4	\$379				
		18U-11-1000-4	1000 cc/min	4	\$449				
	16MX-13-1200-4	1200 cc/min	4	\$549	DW200	9-201-1000*	255 liters/hr	\$99	
	16M-13-1500-4	1500 cc/min	4	\$829	DW300	9-301-1000*	340 liters/hr	\$169	

* Part # denotes universal fitment. Modifications to the OE assembly or use of an aftermarket hanger may be necessary. Contact DW tech support for further assistance.

FUEL INJECTOR & FUEL PUMP PRICE GUIDE By Make & Model

APPLICATION		FUEL INJECTORS				FUEL PUMPS			
Model	Year/Engine	Part #	Flow Rate	Set Qty	Price	Pump Series	Part #	Flow Rate	Price
MAZDA									
Speed 3	2007-2013 2.3L DISI MZR					DW65c	9-651-1026	265 liters/hr	\$149
						DW300c	9-307-1026	340 liters/hr	\$189
Speed 6	2006-2007 2.3L DISI MZR					DW65c	9-651-1026	265 liters/hr	\$149
						DW300c	9-307-1026	340 liters/hr	\$189
MX-5 Miata	2006-2015 2.0L MZR	18U-00-0350-4	350 cc/min	4	\$359				
		18U-00-0440-4	440 cc/min	4	\$349	DW65c	9-651-1009	265 liters/hr	\$149
		18U-00-0550-4	550 cc/min	4	\$349	DW300c	9-307-1009	340 liters/hr	\$189
	1994-2005 1.8L	18U-00-0800-4	800 cc/min	4	\$359				
		22S-00-0350-4	350 cc/min	4	\$349	DW100	9-101-0848	165 Liters/hr	\$99
		22S-00-0450-4	450 cc/min	4	\$349	DW200	9-201-0848	255 liters/hr	\$99
1990-1993 1.6L	22S-00-0700-4	700 cc/min	4	\$359	DW300	9-301-0848	340 liters/hr	\$169	
					DW400	9-401-1041	415 liters/hr	\$239	
MazdaSpeed Protege	2003 2.0L FSDET	21S-00-0350-4	350 cc/min	4	\$299				
		21S-00-0440-4	440 cc/min	4	\$319	DW200	9-201-1000*	255 liters/hr	\$99
		21S-00-0600-4	600 cc/min	4	\$319	DW300	9-301-1000*	340 liters/hr	\$169
		21S-00-0850-4	850 cc/min	4	\$399				
RX7	1986-87 FC 1.3t	42M-03-0550-2	550 cc/min	2	\$199				
		42M-03-0800-2	800 cc/min	2	\$209	DW200	9-201-1000*	255 liters/hr	\$99
		42M-03-1000-2	1000 cc/min	2	\$239	DW300	9-301-1000*	340 liters/hr	\$169
		42M-03-1200-2	1200 cc/min	2	\$269				
MERCEDES-BENZ									
C32 AMG	2002-04 3.2L V6 Supercharged	17U-01-0440-6	440 cc/min	6	\$469	DW200	9-201-1000*	255 liters/hr	\$99
		17U-01-0550-6	550 cc/min	6	\$469	DW300	9-301-1000*	340 liters/hr	\$169
CL55 AMG	2003-06 5.5L V8 Supercharged	17U-01-0440-8	440 cc/min	8	\$609				
		17U-01-0550-8	550 cc/min	8	\$619	DW200	9-201-1000*	255 liters/hr	\$99
		16MX-30-1200-8	1200 cc/min	8	\$1,029	DW300	9-301-1000*	340 liters/hr	\$169
E55 AMG	2003-06 5.5L V8 Supercharged	16M-30-1500-8	1500 cc/min	8	\$1,549				
		17U-01-0440-8	440 cc/min	8	\$609				
		17U-01-0550-8	550 cc/min	8	\$619	DW200	9-201-1000*	255 liters/hr	\$99
S55 AMG, SL55 AMG	2003-06 5.5L V8 Supercharged	16MX-30-1200-8	1200 cc/min	8	\$1,029	DW300	9-301-1000*	340 liters/hr	\$169
		16M-30-1500-8	1500 cc/min	8	\$1,549				
		17U-01-0440-8	440 cc/min	8	\$609				
SLK32 AMG	2002-04 3.2L V6 Supercharged	17U-01-0550-8	550 cc/min	8	\$619	DW200	9-201-1000*	255 liters/hr	\$99
		16MX-30-1200-8	1200 cc/min	8	\$1,029	DW300	9-301-1000*	340 liters/hr	\$169
16M-30-1500-8	1500 cc/min	8	\$1,549						
Mitsubishi									
3000GT	1990-2001 3.0L - 3.0TT	42M-02-0550-6	550 cc/min	6	\$449				
		42M-02-0800-6	800 cc/min	6	\$509	DW200	9-201-1000*	255 liters/hr	\$99
		42M-02-1000-6	1000 cc/min	6	\$549	DW300	9-301-1000*	340 liters/hr	\$169
		42M-02-1200-6	1200 cc/min	6	\$569				
Eclipse (AWD)	1995-1999 4G63T	42M-02-0550-4	550 cc/min	4	\$319				
		42M-02-0800-4	800 cc/min	4	\$339				
		42M-02-1000-4	1000 cc/min	4	\$359				
		42M-02-1200-4	1200 cc/min	4	\$379				
		18U-08-0800-4	800 cc/min	4	\$409	DW200	9-201-0847	255 liters/hr	\$99
		18U-08-1000-4	1000 cc/min	4	\$439	DW300	9-301-0847	340 liters/hr	\$169
		16MX-09-1200-4	1200 cc/min	4	\$549				
		16M-09-1500-4	1500 cc/min	4	\$829				
16S-03-2200-4	2200 cc/min	4	\$839						
Eclipse (FWD)	1990-1994 4G37					DW200	9-201-0883	255 liters/hr	\$99
						DW300	9-301-0883	340 liters/hr	\$169
EVO 8/9	2003-2006 4G63T	42M-02-0550-4	550 cc/min	4	\$319				
		42M-02-0800-4	800 cc/min	4	\$339				
		42M-02-1000-4	1000 cc/min	4	\$359				
		42M-02-1200-4	1200 cc/min	4	\$379				
		18U-08-0800-4	800 cc/min	4	\$409	DW200	9-201-0847	255 liters/hr	\$99
		18U-08-1000-4	1000 cc/min	4	\$439	DW300	9-301-0847	340 liters/hr	\$169
		16MX-09-1200-4	1200 cc/min	4	\$549				
16M-09-1500-4	1500 cc/min	4	\$829						
16S-03-2200-4	2200 cc/min	4	\$839						
EVO X	2008-2015 4B11T	17MX-10-0850-4	850 cc/min	4	\$459				
		17MX-10-1100-4	1100 cc/min	4	\$479	DW65c	9-651-1026	265 liters/hr	\$149
		16M-10-1500-4	1500 cc/min	4	\$829	DW300c	9-307-1026	300 liters/hr	\$189
		16S-05-2200-4	2200 cc/min	4	\$839				

* Part # denotes universal fitment. Modifications to the OE assembly or use of an aftermarket hanger may be necessary. Contact DW tech support for further assistance.

APPLICATION		FUEL INJECTORS				FUEL PUMPS				
Model	Year/Engine	Part #	Flow Rate	Set Qty	Price	Pump Series	Part #	Flow Rate	Price	
NISSAN										
	1995-1998 SR20DET, KA24DE	01J-00-0270-4	270 cc/min	4	\$359	DW100	9-101-1024	165 Liters/hr	\$99	
		01J-00-0370-4	370 cc/min	4	\$359	DW200	9-201-1024	255 liters/hr	\$99	
		01J-00-0550-4	550 cc/min	4	\$439	DW300	9-301-1024	340 liters/hr	\$169	
		01J-00-0740-4	740 cc/min	4	\$459	DW400	9-401-1041	415 liters/hr	\$239	
	1991-1994 SR20DET, KA24DE	01J-00-0270-4	270 cc/min	4	\$359	DW100	9-101-0766	165 Liters/hr	\$99	
		01J-00-0370-4	370 cc/min	4	\$359	DW200	9-201-0766	255 liters/hr	\$99	
		01J-00-0550-4	550 cc/min	4	\$439	DW300	9-301-0766	340 liters/hr	\$169	
		01J-00-0740-4	740 cc/min	4	\$459	DW400	9-401-1041	415 liters/hr	\$239	
	240sx	1989-1990 KA24E	02J-00-0950-4	950 cc/min	4	\$899				
			18U-02-0450-4	450 cc/min	4	\$349				
			18U-02-0550-4	550 cc/min	4	\$389				
			18U-02-0650-4	650 cc/min	4	\$449	DW100	9-101-0766	165 Liters/hr	\$99
18U-02-0800-4			800 cc/min	4	\$349	DW200	9-201-0766	255 liters/hr	\$99	
18U-02-0900-4			900 cc/min	4	\$389	DW300	9-301-0766	340 liters/hr	\$169	
CA18DET N/A	16MX-05-1200-4	1200 cc/min	4	\$549	DW400	9-401-1041	415 liters/hr	\$239		
	16M-05-1500-4	1500 cc/min	4	\$829						
	42M-01-0550-4	550 cc/min	4	\$319	DW100	9-101-1000*	165 liters/hr	\$99		
	42M-01-0800-4	800 cc/min	4	\$339	DW200	9-201-1000*	255 liters/hr	\$99		
1990-1996 VG30DETT, VG30DE	42M-01-1000-4	1000 cc/min	4	\$359	DW300	9-301-1000*	340 liters/hr	\$169		
	42M-01-1200-4	1200 cc/min	4	\$379						
	01J-00-0270-6	270 cc/min	6	\$529						
	01J-00-0370-6	370 cc/min	6	\$529	DW200 (VG30DE)	9-201-1023	255 liters/hr	\$99		
	01J-00-0550-6	550 cc/min	6	\$649	DW300	9-301-1023	340 liters/hr	\$169		
	01J-00-0740-6	740 cc/min	6	\$659	DW400	9-401-1043	415 liters/hr	\$239		
2003-2008 VQ35DE, VQ35HR	02J-00-0950-6	950 cc/min	6	\$929						
	21S-05-0440-6	440 cc/min	6	\$479						
	21S-05-0600-6	600 cc/min	6	\$569						
	17U-06-1000-6	1000 cc/min	6	\$619	DW200	9-201s-1005	255 liters/hr	\$99		
	16MX-06-1200-6	1200 cc/min	6	\$799	DW300	9-301s-1005	340 liters/hr	\$169		
	16M-06-1500-6	1500 cc/min	6	\$1,229						
2009-2015 VQ37VHR	16S-05-2200-6	2200 cc/min	6	\$1,199						
	21S-05-0440-6	440 cc/min	6	\$479						
	21S-05-0600-6	600 cc/min	6	\$569						
	17U-06-1000-6	1000 cc/min	6	\$619	DW200	9-201-1020	255 liters/hr	\$99		
	16MX-06-1200-6	1200 cc/min	6	\$799	DW300	9-301-1020	340 liters/hr	\$169		
	16M-06-1500-6	1500 cc/min	6	\$1,229						
2009-2015 VR38DETT	16S-05-2200-6	2200 cc/min	6	\$1,199						
	17U-06-0750-6	750 cc/min	6	\$619						
	17U-06-1000-6	1000 cc/min	6	\$619						
	16MX-06-1200-6	1200 cc/min	6	\$799	DW65c	9-652-1009 (x2)	265 liters/hr	\$149 per		
	16M-06-1500-6	1500 cc/min	6	\$1,229	DW300c	9-309-1009 (x2)	340 liters/hr	\$189 per		
	16S-05-2200-6	2200 cc/min	6	\$1,199						
2000-2006 QG18DE	21S-05-0440-4	440 cc/min	4	\$349	DW200	9-201-1000*	255 liters/hr	\$99		
	21S-05-0600-4	600 cc/min	4	\$349	DW300	9-301-1000*	340 liters/hr	\$169		
	17U-06-1000-4	1000 cc/min	4	\$419						
2002-2012 QR25DE	21S-05-0440-4	440 cc/min	4	\$349	DW200	9-201-1000*	255 liters/hr	\$99		
	21S-05-0600-4	600 cc/min	4	\$349	DW300	9-301-1000*	340 liters/hr	\$169		
	17U-06-1000-4	1000 cc/min	4	\$419						
1998-2002 NEO RB25DET	21S-05-0440-6	440 cc/min	6	\$479						
	21S-05-0600-6	600 cc/min	6	\$569						
	17U-06-1000-6	1000 cc/min	6	\$619	DW200	9-201-1000*	255 liters/hr	\$99		
	16MX-06-1200-6	1200 cc/min	6	\$799	DW300	9-301-1000*	340 liters/hr	\$169		
	16M-06-1500-6	1500 cc/min	6	\$1,229						
	16S-05-2200-6	2200 cc/min	6	\$1,199						
1993-1998 RB25DET	01J-00-0370-6	370 cc/min	6	\$529						
	01J-00-0550-6	550 cc/min	6	\$649	DW300	9-301-1023	340 liters/hr	\$169		
	01J-00-0740-6	740 cc/min	6	\$659	DW400	9-401-1043	415 liters/hr	\$239		
	02J-00-0950-6	950 cc/min	6	\$899						
1989-1994 RB20DET	18U-02-0440-6	440 cc/min	6	\$429						
	18U-02-0550-6	550 cc/min	6	\$429						
	18U-02-0650-6	650 cc/min	6	\$449						
	18U-02-0800-6	800 cc/min	6	\$479	DW200	9-201-1000*	255 liters/hr	\$99		
	18U-02-0900-6	900 cc/min	6	\$529	DW300	9-301-1000*	340 liters/hr	\$169		
	16MX-05-1200-6	1200 cc/min	6	\$799						
1989-2002 RB26DETT	16M-05-1500-6	1500 cc/min	6	\$1,229						
	42M-01-0550-6	550 cc/min	6	\$449						
	42M-01-0800-6	800 cc/min	6	\$509						
	42M-01-1000-6	1000 cc/min	6	\$549						
	42M-01-1200-6	1200 cc/min	6	\$569	DW300	9-301-1000*	340 liters/hr	\$169		
	16MX-05-1200-6	1200 cc/min	6	\$799						
16M-05-1500-6	1500 cc/min	6	\$1,229							

* Part # denotes universal fitment. Modifications to the OE assembly or use of an aftermarket hanger may be necessary. Contact DW tech support for further assistance.

FUEL INJECTOR & FUEL PUMP PRICE GUIDE By Make & Model

APPLICATION		FUEL INJECTORS				FUEL PUMPS			
Model	Year/Engine	Part #	Flow Rate	Set Qty	Price	Pump Series	Part #	Flow Rate	Price
PORSCHE									
911 996 (Turbo)	2001-05 H6 3.6L turbo	17U-01-0440-6	440 cc/min	6	\$469				
		17U-01-0550-6	550 cc/min	6	\$469				
		17U-01-0650-6	650 cc/min	6	\$599	DW200	9-201-1000*	255 liters/hr	\$99
		17U-01-0750-6	750 cc/min	6	\$619	DW300	9-301-1000*	340 liters/hr	\$169
		17U-01-1000-6	1000 cc/min	6	\$619				
		16MX-30-1200-6	1200 cc/min	6	\$799				
		16M-30-1500-6	1500 cc/min	6	\$1,229				
911 996 (Non Turbo)	1998-2005 2.7L 3.4L 3.6L	18U-01-0440-6	440 cc/min	6	\$429				
		18U-01-0550-6	550 cc/min	6	\$429	DW200	9-201-1000*	255 liters/hr	\$99
		18U-01-0650-6	650 cc/min	6	\$429	DW300	9-301-1000*	340 liters/hr	\$169
		18U-01-0800-6	800 cc/min	6	\$439				
PONTIAC									
Firebird Formula, Trans Am	1998-2002 5.7L LS1	18U-01-0039-8	39 lb/hr	8	\$479				
		18U-01-0042-8	42 lb/hr	8	\$479				
		18U-01-0050-8	50 lb/hr	8	\$479				
		18U-01-0060-8	60 lb/hr	8	\$519				
		18U-01-0078-8	78 lb/hr	8	\$519	DW200	9-201-1000*	255 liters/hr	\$99
		18U-01-0088-8	88 lb/hr	8	\$619	DW300	9-301-1000*	340 liters/hr	\$169
		17U-05-0095-8	95 lb/hr	8	\$699				
		16MX-20-1200-8	1200 cc/min	8	\$1,029				
		16M-20-1500-8	1500 cc/min	8	\$1,549				
		16S-13-2200-8	2200 cc/min	8	\$1,529				
G8 GT, GXP	2008-2010 6.2L LS3	16U-00-0042-8	42 lb/hr	8	\$499				
		16U-00-0050-8	50 lb/hr	8	\$499				
		16U-00-0065-8	65 lb/hr	8	\$499				
		16U-00-0090-8	90 lb/hr	8	\$699	DW200	9-201-1000*	255 liters/hr	\$99
		16MX-22-1200-8	1200 cc/min	8	\$1,029	DW300	9-301-1000*	340 liters/hr	\$169
		16M-22-1500-8	1500 cc/min	8	\$1,549				
		16S-00-2200-8	2200 cc/min	8	\$1529				
GTO	2005-2006 6.0L LS2	17U-21-0042-8	42 lb/hr	8	\$619				
		17U-21-0050-8	50 lb/hr	8	\$629				
		17U-21-0060-8	60 lb/hr	8	\$679				
		17U-21-0072-8	72 lb/hr	8	\$699				
		17U-21-0095-8	95 lb/hr	8	\$699	DW65c	9-652-1008	265 liters/hr	\$149
		16MX-21-1200-8	1200 cc/min	8	\$1,029	DW300c	9-309-1008	340 liters/hr	\$189
		16M-21-1500-8	1500 cc/min	8	\$1,549				
		16S-12-2200-8	2200 cc/min	8	\$1529				
				18U-01-0039-8	39 lb/hr	8	\$479		
		18U-01-0042-8	42 lb/hr	8	\$479				
		18U-01-0050-8	50 lb/hr	8	\$479				
		18U-01-0060-8	60 lb/hr	8	\$519				
		18U-01-0078-8	78 lb/hr	8	\$519	DW65c	9-652-1008	265 liters/hr	\$149
		18U-01-0088-8	88 lb/hr	8	\$619	DW300c	9-309-1008	340 liters/hr	\$189
		17U-05-0095-8	95 lb/hr	8	\$699				
		16MX-20-1200-8	1200 cc/min	8	\$1,029				
		16M-20-1500-8	1500 cc/min	8	\$1,549				
		16S-13-2200-8	2200 cc/min	8	\$1529				
Scion									
FR-S	2012-2015 4U-GSE	16U-02-0450-4	450 cc/min	4	\$349				
		16U-02-0700-4	700 cc/min	4	\$349				
		16U-02-0900-4	900 cc/min	4	\$449	DW65c	9-651-1010	265 liters/hr	\$149
		16MX-08-1200-4	1200 cc/min	4	\$549	DW300c	9-307-1010	340 liters/hr	\$189
		16M-08-1500-4	1500 cc/min	4	\$829				
TC	2011-2015 2.5L 2ARFE	22TX-00-0440-4	440 cc/min	4	\$339	DW200	9-201-1000*	255 liters/hr	\$99
		22TX-00-0550-4	550 cc/min	4	\$399	DW300	9-301-1000*	340 liters/hr	\$169
		22TX-00-0750-4	750 cc/min	4	\$399				
	2005-2010 2.4L 2AZFE	18U-11-1000-4	1000 cc/min	4	\$449	DW100	9-101s-1006	165 Liters/hr	\$99
16MX-13-1200-4		1200 cc/min	4	\$549	DW200	9-201s-1006	255 liters/hr	\$99	
16M-13-1500-4		1500 cc/min	4	\$829	DW300	9-301s-1006	340 liters/hr	\$169	
XA/B	2004-2010 1.5L, 2.4L	18U-11-1000-4	1000 cc/min	4	\$449	DW200	9-201-1000*	255 liters/hr	\$99
						DW300	9-301-1000*	340 liters/hr	\$169
	2004-2010 2.4L 2AZFE	16MX-13-1200-4	1200 cc/min	4	\$549	DW200	9-201-1000*	255 liters/hr	\$99
16M-13-1500-4		1500 cc/min	4	\$829	DW300	9-301-1000*	340 liters/hr	\$169	

* Part # denotes universal fitment. Modifications to the OE assembly or use of an aftermarket hanger may be necessary. Contact DW tech support for further assistance.

APPLICATION		FUEL INJECTORS				FUEL PUMPS			
Model	Year/Engine	Part #	Flow Rate	Set Qty	Price	Pump Series	Part #	Flow Rate	Price
SUBARU									
BRZ	2012-2015 FA20	16U-02-0450-4	450 cc/min	4	\$349				
		16U-02-0700-4	700 cc/min	4	\$349	DW65c	9-651-1010	265 liters/hr	\$149
		16U-02-0900-4	900 cc/min	4	\$449	DW300c	9-307-1010	340 liters/hr	\$189
		16MX-08-1200-4	1200 cc/min	4	\$549				
		16M-08-1500-4	1500 cc/min	4	\$829				
Impreza (2.5RS)	1999-2003 EJ251	21S-05-0440-4	440 cc/min	4	\$349	DW200	9-201-0791	255 liters/hr	\$99
		21S-05-0600-4	600 cc/min	4	\$349	DW300	9-301-0791	340 liters/hr	\$169
		17U-06-1000-4	1000 cc/min	4	\$419				
	1997-98 EJ25D	02J-00-0740-4	740 cc/min	4	\$599	DW200	9-201-0791	255 liters/hr	\$99
		02J-00-0850-4	850 cc/min	4	\$649	DW300	9-301-0791	340 liters/hr	\$169
		02J-00-1000-4	1000 cc/min	4	\$649				
Forester	1997-2007 EJ25D, EJ255, EJ25					DW200	9-201-0791	255 liters/hr	\$99
						DW300	9-301-0791	340 liters/hr	\$169
Legacy GT	2010-2012 EJ25	21S-01-0650-4	650 cc/min	4	\$389				
		17U-07-0750-4	750 cc/min	4	\$429				
		21S-01-0850-4	850 cc/min	4	\$549	DW200	9-201s-1005	255 liters/hr	\$99
		17U-07-1000-4	1000 cc/min	4	\$449	DW300	9-301s-1005	340 liters/hr	\$169
		16MX-07-1200-4	1200 cc/min	4	\$549				
		16M-07-1500-4	1500 cc/min	4	\$829				
		16S-01-2200-4	2200 cc/min	4	\$839				
	2007-2009 EJ25	21S-01-0650-4	650 cc/min	4	\$369				
		17U-07-0750-4	750 cc/min	4	\$439	DW65c	9-652-1008	265 liters/hr	\$149
		21S-01-0850-4	850 cc/min	4	\$549	DW300c	9-309-1008	340 liters/hr	\$189
		17U-07-1000-4	1000 cc/min	4	\$429				
	2004-06 EJ25	16S-01-2200-4	2200 cc/min	4	\$839				
		02J-00-0740-4	740 cc/min	4	\$589	DW65c	9-652-1008	265 liters/hr	\$149
		02J-00-0850-4	850 cc/min	4	\$629	DW300c	9-309-1008	340 liters/hr	\$189
	2008-2015 EJ25	02J-00-1000-4	1000 cc/min	4	\$629				
		21S-01-0650-4	650 cc/min	4	\$389				
		17U-07-0750-4	750 cc/min	4	\$429				
STI	2007 EJ25	21S-01-0850-4	850 cc/min	4	\$549	DW65c	9-652-1008	265 liters/hr	\$149
		17U-07-1000-4	1000 cc/min	4	\$449	DW300c	9-309-1008	340 liters/hr	\$189
		16MX-07-1200-4	1200 cc/min	4	\$549				
		16M-07-1500-4	1500 cc/min	4	\$829				
		16S-01-2200-4	2200 cc/min	4	\$839				
		21S-01-0650-4	650 cc/min	4	\$369				
		17U-07-0750-4	750 cc/min	4	\$429				
	2004-2006 EJ25	21S-01-0850-4	850 cc/min	4	\$549	DW200	9-201-0791	255 liters/hr	\$99
		17U-07-1000-4	1000 cc/min	4	\$449	DW300	9-301-0791	340 liters/hr	\$169
		16MX-07-1200-4	1200 cc/min	4	\$549				
	2015	16M-07-1500-4	1500 cc/min	4	\$829				
		16S-01-2200-4	2200 cc/min	4	\$839				
		02J-00-0740-4	740 cc/min	4	\$599	DW65c	9-651-1010	265 liters/hr	\$149
WRX	2008-2014 EJ20, EJ25	02J-00-0850-4	850 cc/min	4	\$649	DW300c	9-307-1010	340 liters/hr	\$189
		02J-00-1000-4	1000 cc/min	4	\$649				
		21S-01-0565-4	565 cc/min	4	\$369				
		21S-01-0650-4	650 cc/min	4	\$389				
		17U-07-0750-4	750 cc/min	4	\$429				
		21S-01-0850-4	850 cc/min	4	\$549	DW65c	9-652-1008	265 liters/hr	\$149
		17U-07-1000-4	1000 cc/min	4	\$449	DW300c	9-309-1008	340 liters/hr	\$189
	2002-2007 EJ20, EJ25	16MX-07-1200-4	1200 cc/min	4	\$549				
		16M-07-1500-4	1500 cc/min	4	\$829				
		16S-01-2200-4	2200 cc/min	4	\$839				
		21S-01-0565-4	565 cc/min	4	\$369				
		21S-01-0650-4	650 cc/min	4	\$389				
		17U-07-0750-4	750 cc/min	4	\$429	DW200	9-201-0791	255 liters/hr	\$99
		21S-01-0850-4	850 cc/min	4	\$549	DW300	9-301-0791	340 liters/hr	\$169
	1993-2001 EJ20	17U-07-1000-4	1000 cc/min	4	\$449	DW400	9-401-1041	415 liter/hr	\$239
		16MX-07-1200-4	1200 cc/min	4	\$549				
		16M-07-1500-4	1500 cc/min	4	\$829				
		16S-01-2200-4	2200 cc/min	4	\$839				
						DW200	9-201-0791	255 liters/hr	\$99
						DW300	9-301-0791	340 liters/hr	\$169
						DW400	9-401-1041	415 liters/hr	\$239

* Part # denotes universal fitment. Modifications to the OE assembly or use of an aftermarket hanger may be necessary. Contact DW tech support for further assistance.

FUEL INJECTOR & FUEL PUMP PRICE GUIDE By Make & Model

APPLICATION		FUEL INJECTORS				FUEL PUMPS			
Model	Year/Engine	Part #	Flow Rate	Set Qty	Price	Pump Series	Part #	Flow Rate	Price
TOYOTA									
86	2012-2015 4U-GSE	16U-02-0450-4	450 cc/min	4	\$349				
		16U-02-0700-4	700 cc/min	4	\$349	DW65c	9-651-1010	265 liters/hr	\$149
		16U-02-0900-4	900 cc/min	4	\$449	DW300c	9-307-1010	340 liters/hr	\$189
		16MX-08-1200-4	1200 cc/min	4	\$549				
		16M-08-1500-4	1500 cc/min	4	\$829				
Celica	2000-2005 1.8L	16MX-13-1200-4	1200 cc/min	4	\$549	DW65c	9-652-1006	265 liters/hr	\$149
		16M-13-1500-4	1500 cc/min	4	\$829	DW300c	9-307-1006	340 liters/hr	\$189
	2.4L 2AZFE	18U-11-1000-4	1000 cc/min	4	\$449	DW65c DW300c	9-652-1006 9-309-1006	265 liters/hr 340 liters/hr	\$149 \$189
MR2	1999-2007 1.8L	16MX-13-1200-4	1200 cc/min	4	\$549	DW65c	9-652-1006	265 liters/hr	\$149
		16M-13-1500-4	1500 cc/min	4	\$829	DW300c	9-309-1006	340 liters/hr	\$189
	2.4L 2AZFE	18U-11-1000-4	1000 cc/min	4	\$449	DW65c DW300c	9-652-1006 9-309-1006	265 liters/hr 340 liters/hr	\$149 \$189
Supra (top feed conversions only)	1993-1998 2JZ-GTE 11mm Fuel Rail Bore	17U-02-1000-6	1000 cc/min	6	\$639				
		16MX-11-1200-6	1200 cc/min	6	\$799				
		16M-11-1500-6	1500 cc/min	6	\$1,229	DW300	9-301-1000*	340 liters/hr	\$169
	1993-1998 2JZ-GTE 14mm Fuel Rail Bore	16S-07-2200-6	2200 cc/min	6	\$1,199				
		17U-03-1000-6	1000 cc/min	6	\$639				
		16MX-14-1200-6	1200 cc/min	6	\$799	DW300	9-301-1000*	340 liters/hr	\$169
		16M-14-1500-6	1500 cc/min	6	\$1,229				
		16S-08-2200-6	2200 cc/min	6	\$1,199				
VOLKSWAGEN									
Golf GTI	1999-2006 1.8L turbo	17U-01-0440-4	440 cc/min	4	\$319				
		17U-01-0550-4	550 cc/min	4	\$319				
		17U-01-0650-4	650 cc/min	4	\$379				
		17U-01-0750-4	750 cc/min	4	\$389	DW65v	9-654-1025	265 liters/hr	\$249
		17U-01-1000-4	1000 cc/min	4	\$409				
		16MX-30-1200-4	1200 cc/min	4	\$549				
		16M-30-1500-4	1500cc/min	4	\$829				
Passat	1998-2005 1.8L turbo					DW65v	9-654-1025	265 liters/hr	\$249
Jetta	1999-2005 1.8L turbo					DW65v	9-654-1025	265 liters/hr	\$249
Beetle	1998-2010 1.8L turbo					DW65v	9-654-1025	265 liters/hr	\$249
Golf GTI R32	2004-05 3.2L VR6	21S-05-0440-6	440 cc/min	6	\$479				
		21S-05-0600-6	600 cc/min	6	\$569				
		17U-06-1000-6	1000 cc/min	6	\$699	DW65v AWD	9-655-1025	265 Liters/hr	\$249
		16MX-06-1200-6	1200 cc/min	6	\$799				
		16M-06-1500-6	1500 cc/min	6	\$1,229				

* Part # denotes universal fitment. Modifications to the OE assembly or use of an aftermarket hanger may be necessary. Contact DW tech support for further assistance.

Chase Lautenbach- DW Powered 18 Mustang GT

Chase's Mustang is fueled by DeatschWerks 95# drop-in injectors with a P1X Procharger making 1000hp to the wheels.



ELECTRICAL CONNECTOR GUIDE

Part #	Type	Installation	Price	Part #	Type	Installation	Price
conn-uscar*	Uscar	Comes pinned w/ pigtails for wire-in installation	\$9	conn-ssf	Subaru Side-Feed	Comes pinned w/ pigtails for wire-in installation	\$8
conn-uscarx*	Uscar	Exploded, w/ housing & pins separate for re-pin installation	\$5	conn-sumitomo**	Sumitomo	Comes pinned w/ pigtails for wire-in installation	\$9
conn-delphi	Delphi	Comes pinned w/ pigtails for wire-in installation	\$9	conn-sumx**	Sumitomo	, w/ housing and pins separate for re-pin installation	\$7
conn-jetronic	Minitimer/EV1	Comes pinned w/ pigtails for wire-in installation	\$6	conn-US-HON*	Uscar to Honda	PnP adapter	\$12
conn-nsf	Nissan Side-Feed	Comes pinned w/ pigtails for wire-in installation	\$8	conn-US-JT*	Uscar to Minitimer/EV1	PnP adapter	\$6
conn-JT-US	Minitimer/EV1 to Uskar	PnP adapter	\$6	conn-US-SUM*	Uscar to Sumitomo	PnP adapter	\$12
conn-us-sumw	Uscar to Sumitomo Wired	PnP adapter	\$8	conn-JT-hon2w	Jetronic to 9th Gen Honda Civic	PnP adapter	\$8
				conn-JT-USw	Jetronic/Minitimer/EV1 to USCAR	Wired Connector	\$8

* Can be used with 16U, 17U, 18U PN's from Bosch EV14 universal injector line ** Can be used with 16S PN's from Bosch EV14 universal injector line



Faruk Kugay - E92 BMW M3

Faruk's BMW runs a 2JZ with a set of DW 2200cc injectors, DW Surge Tank, 2x DW350il fuel pumps, DWR2000 Regulator and a DWFF160 Fuel Filter. .



QUICK REFERENCE FUEL PUMP GUIDE

DW100

165 LITERS/HR - \$99



Make/Model	Year/Engine	Part #
Universal	Fits most models	9-101-1000
Acura Integra	1994-2001	9-101-0846
Chevrolet Corvette	1984-1985	9-101-1027
Chevrolet Corvette	1986-1989	9-101-1028
Chevrolet Corvette(exc ZR-1)	1990-1996	9-101-1029
Honda Civic	1992-2000	9-101-0846
Honda Civic (exc Si)	2006-2011 R18	9-101s-1007
Honda S2000	2006-2009 F22	9-101s-1004
Kia Forte	2010-2015 2.0/2.5	9-101s-1003
Mazda Miata	1989-1993 1.6L, 1.8L	9-101-0836
Mazda Miata	1994-2005 1.6L, 1.8L	9-101-0848
Nissan 240sx (S13)	1989-1994 Various	9-101-0766
Nissan 240sx/Silvia (S14/S15)	1994-2002 Various	9-101-1024
Scion TC	2005-2010 2.4L 2AZFE	9-101s-1006
Subaru Impreza (exc WRX & STi)	1993-2007 EJ20, EJ25	9-101-0791
Subaru Legacy	1990-2007 EJ22, EJ20, EJ25	9-101-0791

DW200

255 LITERS/HR - \$99



Make/Model	Year/Engine	Part #
Universal	Fits most models	9-201-1000
Acura Integra	1994-2001	9-201-0846
BMW E36/E46	1992-1999 2.5L/3.2L	9-201-1031
Chevrolet Corvette	1984-1985	9-201-1027
Chevrolet Corvette	1986-1989	9-201-1028
Chevrolet Corvette	1990-1996	9-201-1029
Ford Mustang	1985-1997 I4 V6 V8 (excl Turbo)	9-201-1014
Honda Civic	1992-2000	9-201-0846
Honda S2000	2006-2009 F22	9-201s-1004
Hyundai Genesis Coupe	2008-2013 2.0T/3.8 V6	9-201s-1003
Infiniti G35	2003-2008 VQ35DE, VQ35HR	9-201s-1005
Infiniti G37	2008-2014 VQ37DE	9-201-1020
Infiniti Q45	1991-2001 VH45DE, VH41DE	9-201-0766
Kia Forte	2010+ 2.0/2.5	9-201s-1003
Mazda Miata	1989-1993 1.6L, 1.8L	9-201-0836
Mazda Miata	1994-2005 1.6L, 1.8L	9-201-0848
Mitsubishi Eclipse (all FWD)	1990-1994 4G37	9-201-0883
Mitsubishi Eclipse (turbo AWD)	1995-1998 4G63T	9-201-0847
Mitsubishi EVO 8/9	2003-2006 4G63T	9-201-0847
Nissan 240sx (S13)	1989-1993 Various	9-201-0766
Nissan 240sx/Silvia (S14/S15)	1994-2002 Various	9-201-1024
Nissan 300zx (Z32)	1990-1996 VQ30	9-201-1023
Nissan 350z	2003-2008 VQ35DE, VQ35HR	9-201s-1005
Nissan 370z	2009-2015	9-201-1020
Scion TC	2005-2010 2.4L 2AZFE	9-201s-1006
Subaru Forester	1997-2007 EJ25D, EJ255, EJ25	9-201-0791
Subaru Impreza, WRX & STi	1993-2007 EJ20, EJ25	9-201-0791
Subaru Legacy	1990-2007 EJ22, EJ20, EJ25	9-201-0791
Subaru Legacy GT	2010-2012 EJ25	9-201s-1005

DW250iL

255 LITERS/HR - \$119



Make/Model	Year/Engine	Part #
Universal	Fits most models	9-250

DW350iL

350 LITERS/HR - \$209



Make/Model	Year/Engine	Part #
Universal	Fits most models	9-350

DW65v

265 LITERS/HR - \$249



Make/Model	Year/Engine	Part #
Various Audi/VW	1.8t FWD	9-654-1025
Various Audi/VW	2.0 TSI TFSI LPFP	9-654-1025
Various Audi/VW	1.8t AWD	9-655-1025
Various Audi/VW	3.2 VR6 AWD	9-655-1025

DW65c

265 LITERS/HR - \$149



Make/Model	Year/Engine	Part #
Universal	Fits most models	9-651-1000
Universal	Fits most models	9-652-1000
Acura RSX	2002-2006 K20, K24	9-651-1009
BMW E30	1988-1991 2.5L	9-651-1030
Ford SVT Lightning	1999-2004 V8	9-651-1013*
Ford F150 Harley-Davidson Edition	2002-2003 V8	9-651-1013*
Ford Focus RS	2009-2010 I5 Turbo	9-651-1017
Holden Commodore	1997-2006 5.7, 6.0	9-653-1011
Holden Commodore	2007-2013 6.0	9-651-1018
Honda Civic	2001-2005 D17	9-651-1009
Honda Civic	2006-2011 All	9-651-1008
Jeep Wrangler	1997-2004 2.5L/4.0L	9-651-1051
Jeep Wrangler	2007-2017 3.8 L	9-651-1026
Lotus Exige	2004+	9-652-1006
Lotus Elise	2004+	9-652-1006
Mazda MX5	2006-2015 2.0L MZR	9-651-1009
Mazda Speed 3	2007-2013 2.3L DISI MZR	9-651-1026
Mazda Speed 6	2006-2007 2.3L DISI MZR	9-651-1026
Mitsubishi EVO X	2008-2015 4B11T	9-651-1026
Nissan R35 GTR	2008-2015 VR38DETT	9-652-1009*
Pontiac GTO	2004-2006 LS1, LS2	9-652-1008
Scion FR-S	2012-2015 FA20, 4U-GSE	9-651-1010
Subaru BRZ	2012-2015 FA20, 4U-GSE	9-651-1010
Subaru Legacy GT	2005-2009 EJ25	9-652-1008
Subaru STi	2008-2015 2.5	9-652-1008
Subaru WRX	2008-2014 2.5	9-652-1008
Subaru WRX	2015 2.0	9-651-1010
Toyota 86	2012-2015 FA20, 4U-GSE	9-651-1010

* Requires qty 2. Dual pump system

QUICK REFERENCE FUEL PUMP GUIDE

DW300

340 LITERS/HR - \$169



Make/Model	Year/Engine	Part #
Universal	Fits most models	9-301-1000
Acura Integra	1991-2001	9-301-0846
BMW E36/E46	1992-1999	9-301-1031
Cadillac CTS-V	2004-2007	9-301-1038
Chevrolet Corvette	1984-1985	9-301-1027
Chevrolet Corvette	1986-1989	9-301-1028
Chevrolet Corvette	1990-1996	9-301-1029
Ford Mustang	1985-1997 I4 V6 V8 (excl Turbo)	9-301-1014
Honda Civic	1992-2000	9-301-0846
Honda S2000	2006-2009 F22	9-301s-1004
Hyundai Genesis Coupe	2008-2013 2.0T/3.8 V6	9-301s-1003
Infiniti G35	2003-2008 VQ35DE, VQ35HR	9-301s-1005
Infiniti G37	2008-2014 VQ37VHR	9-301-1020
Infiniti Q45	1991-2001 VH45DE, VH41DE	9-301s-1003
Kia Forte	2010-2015 2.0/2.5	9-301-0836
Mazda Miata	1989-1993 1.6L, 1.8L	9-301-0848
Mazda Miata	1994-2005 1.6L, 1.8L	9-301-0883
Mitsubishi Eclipse (all FWD)	1990-1994 4G37	9-301-0847
Mitsubishi Eclipse (turbo AWD)	1995-1998 4G63T	9-301-0847
Mitsubishi EVO 8/9	2003-2006 4G63T	9-301-0847
Nissan 240sx (S13)	1989-1993 Various	9-301-0766
Nissan 240sx / Silvia (S14/S15)	1994-2002 Various	9-301-1024
Nissan 300zx (Z32)	1990-1996 VQ30 VQ30DETT	9-301-1023
Nissan Skyline (R33)	1993-1998 RB25/ RB26	9-301-1023
Nissan 350z	2003-2008 VQ35DE, VQ35HR	9-301-1005
Nissan 370z	2009-2015 VQ37VHR	9-301-1020
Scion TC	2005-2010 2.4L 2AZFE	9-301s-1006
Subaru Forester	1997-2007 EJ25D, EJ255, EJ25	9-301-0791
Subaru Impreza, WRX &	1993-2007 EJ20, EJ25	9-301-0791
Subaru Legacy	1990-2007 EJ22, EJ20, EJ25	9-301-0791
Subaru Legacy GT	2010-2012 EJ25	9-301s-1005

DW300c

340 LITERS/HR - \$189



Make/Model	Year/Engine	Part #
Universal	Fits most models	9-307-1000
Universal	Fits most models	9-309-1000
Cadillac CTS-V	2009-2015 (2 Pumps)	9-309-1039
Acura RSX	2002-2006 K20, K24	9-307-1009
Ford SVT Cobra	2003-2004 (2 Pumps)	9-307-1033
Ford SVT Lightning	1999-2004 V8	9-307-1013*
Ford F150 Harley-Davidson Edition	2002-2003 V8	9-307-1013*
Ford Focus RS	2009-2010 I5 Turbo	9-307-1017
Holden Commodore	2007-2013 6.0	9-307-1018
Honda Civic	2001-2005 D17	9-307-1009
Honda Civic	2006-2011 All	9-307-1008
Jeep Wrangler	2007-2017 3.8L	9-307-1026
Lotus Elise	2004+	9-309-1006

Lotus Exige	2004+	9-309-1006
Mazda MX5	2006-2015 2.0L MZR	9-307-1009
Mazda Speed 3	2007-2013 2.3L DISI MZR	9-307-1026
Mazda Speed 6	2006-2007 2.3L DISI MZR	9-307-1026
Mitsubishi EVO X	2008-2015 4B11T	9-307-1026
Nissan R35 GTR	2008-2015 VR38DETT	9-309-1009*
Pontiac GTO	2004-2006 LS1, LS2	9-309-1008
Scion FR-S	2012-2015 FA20, 4U-GSE	9-307-1010
Subaru BRZ	2012-2015 FA20, 4U-GSE	9-307-1010
Subaru Legacy GT	2005-2009 EJ25	9-309-1008
Subaru WRX/STI	2008-2013 EJ20, EJ25	9-309-1008
Toyota 86	2012-2015 FA20, 4U-GSE	9-307-1010
Toyota Celica	2000-2005 1.6/1.8	9-309-1006
Toyota Corolla	2003-2004 1.6/1.8	9-309-1006
Toyota Matrix	2003-2004 1.6/1.8	9-309-1006
Toyota MR2 Spyder	2000-2005 1.6/1.8	9-309-1006

* Requires qty 2. Dual pump system

DW300M

340 LITERS/HR - \$169



Make/Model	Year/Engine	Part #
Ford Mustang	1999-2004 V6/V8 (exc SC)	9-305-1032
Ford Mustang	2005-2010 V6/V8 (exc SC)	9-305-1034
Ford Mustang GT500 /GT500KR	2007-2010 5.4L (2 Pumps)	9-305-1035
Ford Focus ST MKII (Euro)	2005-2010 2.5L	9-305-1036
Ford F150/250	1997-2004V6/V8 (Gasoline)	9-305-1037

DW400

415 LITERS/HR - \$239-\$279



Make/Model	Year/Engine	Part #
Universal	Fits most models	9-401-1001
BMW E36/E46	1992-1999 2.5L/3.2L	9-401-1052
Mitsubishi Eclipse (FWD Only)	1990-1999	9-401-1041
Ford Mustang (Incl. Cobra)	1985-1997	9-401-1044
Ford Mustang	2005-2010 (excl. GT500)	9-401-1045
Ford Mustang	2011-2014 (both V6 & GT)	9-401-1046
Ford Mustang	2015-2018 (incl V6 & GT) (with venturi outlet)	9-401-1047
Ford F150 Lightning & Harley Davidson	1999-2004 V8 (2 pumps)	9-401-1049
Grand National, Syclone, Typhoon		9-401-1001
Nissan Patrol, S13/14/15	1998-2011 (Patrol)	9-401-1040
Nissan Skyline (R33), 300zx (Z32)		9-401-1043
Mazda Miata/MX5	1994-2005	9-401-1041
Mazda Miata/MX5	1989-1993	9-401-1042
Subaru WRX/STI	1993-2004	9-401-1041

DWMicro

Low Pressure Lift Pump

210 LITERS/HR - \$59-\$69



Make/Model	Year/Engine	Part #
Universal	Barb Outlet	9-110-1055
Universal	-6AN Outlet	9-110-1056
Universal	-8AN Outlet	9-110-1057

FUEL PUMP FITMENT KIT PRICE GUIDE

All DW fuel pumps come with an installation kit at no extra charge.

If you need a replacement kit, it may be purchased separately

Kit Part #	Make/Model	Year/Engine	Price	Kit Part #	Make/Model	Year/Engine	Price
9-1000	Universal		\$21	9-1023	Nissan Skyline (R33)	1993-1998 RB25DET, RB26DETT	\$19
9-0766	Nissan 240sx (S13)	1989-1993 Fits Various Models	\$21		Nissan 300zx (Z32)	1990-1996 VG30DE	\$19
9-1027	Chevrolet Corvette C4	1984-1985 5.7	\$19		Nissan 300zx (Z32)	1990-1996 VG30DETT	\$19
9-1028	Chevrolet Corvette C4	1986-1989 5.7	\$19	9-1024	Nissan 240sx / Silvia (S14/S15)	1994+ Various Models	\$19
9-1029	Chevrolet Corvette C4	1990-1996 (exc ZR-1) 5.7	\$19	9-1025	Audi A4/A6/TT	1996-2006 1.8t FWD	\$10
9-1038	Cadillac CTS-V	2004-2007 LS2 6.0, LS6 5.7	\$19		VW Golf	1999-2006 1.8t	\$10
9-1039	Cadillac CTS-V	2009-2014 LSA 6.2	\$19		VW Jetta	1999-2005 1.8t	\$10
	Infiniti Q45	1991-2001 VH45DE, VH41DE	\$21		VW Beetle	1998-2010 1.8t	\$10
9-0791	Subaru Forester	1997-2007 EJ25D, EJ255, EJ25	\$22		VW Passat	1998-2008 1.8t	\$10
	Subaru Impreza (WRX and STi)	1993-2007 EJ20, EJ25	\$22	9-1026	Mitsubishi Evo X	2008-2011 4B11T	\$19
	Subaru Legacy	1990-2007 EJ22, EJ20, EJ25	\$22		Mazda Speed 3	2007-2012 2.3i DISI MZR	\$19
9-0836	Mazda Miata	1989-1993 1.6L, 1.8L	\$24		Mazda Speed 6	2006-2007 2.3L DISI MZR	\$19
9-0846	Acura Integra	1994-2001 Fits Various Models	\$16	9-1001	DW400 Universal Fitment		\$21
	Honda Civic	1992-2000 Fits Various Models	\$16	9-1041	Nissan S13/14/15		\$21
9-0847	Mitsubishi Eclipse (AWD)	1995-1998 4G63T	\$25		Patrol	1998-2011	\$21
	Mitsubishi EVO 8/9	2003-2007 4G63T	\$25		Subaru Forester	1997-2007	\$21
9-0848	Mazda Miata	1994-2005 1.6L, 1.8L	\$21		Subaru WRX/STi	1993-2004	\$21
9-0883	Mitsubishi Eclipse (FWD)	1990-1994 4G37	\$19		Subaru Legacy GT	1990-2000	\$21
9-1008	Honda Civic SI	2006-2011 K20, K24	\$15		Mazda Miata/MX5	1994-2005	\$21
	Pontiac GTO	2004-2006 LS1, LS2	\$15		Eclipse, Talon (FWD)	1990-1999	\$21
	Subaru Legacy GT	2005-2009 EJ25	\$15	9-1042	Mazda Miata/MX5	1989-1993	\$21
	Subaru WRX/STi	2008-2012 EJ20, EJ25	\$15	9-1043	Nissan 300zx Z32		\$21
9-1009	Acura RSX	2002-2006 K20, K24	\$9		Nissan Skyline R33		\$21
	Honda Civic	2001-2005 D17	\$9	9-1044	Ford Mustang (incl. Cobra)	1985-1997	\$21
	Mazda MX5	2006-2013 2.0L MZR	\$9	9-1045	Ford Mustang	2005-2010 (Excl. GT500)	\$21
	Nissan GTR R35	2008-2012 VR38DETT	\$9	9-1046	Ford Mustang	2011-2014 V6/GT	\$39
9-1010	Subaru BRZ	2012+ FA20, 4U-GSE	\$21	9-1049	Ford F150 Lightning	1999-2004	\$21
	Toyota 86	2012+ FA20, 4U-GSE	\$21		Ford F150 Harley Davidson	1999-2004	\$21
	Scion FR-S	2012+ FA20, 4U-GSE	\$21	9-1034	Ford Mustang	2005-2010 V6 V8 (ex GT500)	\$15
9-1011	Holden Commodore Gen III	1997-2006 5.7. 6.0	\$15	9-1035	Ford Mustang GT500 /GT500 KR	2007-2010 V8	\$19
9-1037	Ford F150/250	1997-2004 V6 V8	\$19	9-1017	Ford Focus MK2 RS	2009-2011 I5 Turbo	\$15
9-1013	Ford Lightning	1999-2004 V8	\$15	9-1036	Ford Focus MK2 ST (Euro)	2005-2010 I5 Turbo	\$9
	Ford Harley Davidson	2002-2003 V8	\$15	9-1018	Holden Commodore Gen IV	2007-2013 6.0	\$15
9-1014	Ford Mustang	1985-1997 I4 V6 V8 (ex Turbo)	\$15	9-1019	Mazda RX8	2004-2008 1.3	\$19
9-1032	Ford Mustang	1999-2004 V6 V8 (ex SC)	\$15	9-1020	Nissan 370z/Infiniti G37	2008+ 3.7	\$19
9-1033	Ford Mustang Cobra	2003-2004 V8	\$29				

LOW IMPEDANCE UNIVERSAL FUEL INJECTOR PRICE GUIDE

4 Cylinder					6 Cylinder					8 Cylinder				
Part #	Flow Rate	Qty	Fuel Rail Bore	Price	Part #	Flow Rate	Qty	Fuel Rail Bore	Price	Part #	Flow Rate	Qty	Fuel Rail Bore	Price
42M-11-0350-4	350cc/min	4	11mm	\$299	42M-11-0350-6	350cc/min	6	11mm	\$399	42M-11-0350-8	350cc/min	8	11mm	\$499
42M-11-0450-4	450cc/min	4	11mm	\$289	42M-11-0450-6	450cc/min	6	11mm	\$399	42M-11-0450-8	450cc/min	8	11mm	\$499
42M-11-0550-4	550cc/min	4	11mm	\$309	42M-11-0550-6	550cc/min	6	11mm	\$429	42M-11-0550-8	550cc/min	8	11mm	\$549
42M-11-0800-4	800cc/min	4	11mm	\$329	42M-11-0800-6	800cc/min	6	11mm	\$539	42M-11-0800-8	800cc/min	8	11mm	\$649
42M-11-1000-4	1000cc/min	4	11mm	\$349	42M-11-1000-6	1000cc/min	6	11mm	\$539	42M-11-1000-8	1000cc/min	8	11mm	\$699
42M-11-1200-4	1200cc/min	4	11mm	\$369	42M-11-1200-6	1200cc/min	6	11mm	\$559	42M-11-1200-8	1200cc/min	8	11mm	\$729
42M-11-1800-4	1800cc/min	4	11mm	\$429	42M-11-1800-6	1800cc/min	6	11mm	\$629	42M-11-1800-8	1800cc/min	8	11mm	\$799
42M-14-0800-4	800cc/min	4	14mm	\$329	42M-14-0800-6	800cc/min	6	14mm	\$539	42M-14-0800-8	800cc/min	8	14mm	\$649
42M-14-1000-4	1000cc/min	4	14mm	\$349	42M-14-1000-6	1000cc/min	6	14mm	\$539	42M-14-1000-8	1000cc/min	8	14mm	\$699
42M-14-1200-4	1200cc/min	4	14mm	\$369	42M-14-1200-6	1200cc/min	6	14mm	\$559	42M-14-1200-8	1200cc/min	8	14mm	\$729
42M-14-1800-4	1800cc/min	4	14mm	\$429	42M-14-1800-6	1800cc/min	6	14mm	\$629	42M-14-1800-8	1800cc/min	8	14mm	\$799

BOSCH EV14 UNIVERSAL FUEL INJECTOR PRICE GUIDE

4 CYLINDER

Compact series (40mm)

Part #	Flow Rate	Qty	Height	Fuel Rail Bore	Price
16U-00-0042-4	42lb/hr 440cc/min	4	40mm	14mm	\$259
16U-00-0050-4	50lb/hr 550cc/min	4	40mm	14mm	\$259
16U-00-0065-4	65lb/hr 700cc/min	4	40mm	14mm	\$259
16U-00-0090-4	90lb/hr 950cc/min	4	40mm	14mm	\$359
16MX-00-1200-4	1200 cc/min	4	40mm	14mm	\$549
16M-00-1500-4	1500 cc/min	4	40mm	14mm	\$829
16S-00-2200-4	220lb/hr 2200cc/min	4	40mm	14mm	\$839

Standard Series (48mm)

Part #	Flow Rate	Qty	Height	Fuel Rail Bore	Price
17U-00-0050-4	50lb/hr 550cc/min	4	48mm	14mm	\$359
17U-00-0060-4	60lb/hr 650cc/min	4	48mm	14mm	\$379
17U-00-0072-4	72lb/hr 750cc/min	4	48mm	14mm	\$389
17U-00-0095-4	95lb/hr 1000cc/min	4	48mm	14mm	\$389
16MX-30-1200-4	1200 cc/min	4	48mm	14mm	\$549
16M-30-1500-4	1500 cc/min	4	48mm	14mm	\$829
16S-12-2200-4	220lb/hr 2200cc/min	4	48mm	14mm	\$839
16S-10-2200-4	220lb/hr 2200cc/min	4	48mm	11mm	\$839

Long Series (60mm)

Part #	Flow Rate	Qty	Height	Fuel Rail Bore	Price
18U-00-0042-4	42lb/hr 440cc/min	4	60mm	14mm	\$269
18U-00-0050-4	50lb/hr 550cc/min	4	60mm	14mm	\$269
18U-00-0060-4	60lb/hr 650cc/min	4	60mm	14mm	\$289
18U-00-0078-4	78lb/hr 800cc/min	4	60mm	14mm	\$289
18U-00-0088-4	88lb/hr 900cc/min	4	60mm	14mm	\$319
16MX-20-1200-4	1200 cc/min	4	60mm	14mm	\$549
16M-20-1500-4	1500 cc/min	4	60mm	14mm	\$829
16S-13-2200-4	220lb/hr 2200cc/min	4	60mm	14mm	\$839
16S-11-2200-4	220lb/hr 2200cc/min	4	60mm	11mm	\$839

8 CYLINDER

Compact series (40mm)

Part #	Flow Rate	Qty	Height	Fuel Rail Bore	Price
16U-00-0042-8	42lb/hr 440cc/min	8	40mm	14mm	\$499
16U-00-0050-8	50lb/hr 550cc/min	8	40mm	14mm	\$499
16U-00-0065-8	65lb/hr 700cc/min	8	40mm	14mm	\$499
16U-00-0090-8	90lb/hr 950cc/min	8	40mm	14mm	\$699
16MX-00-1200-8	1200 cc/min	8	40mm	14mm	\$1,029
16M-00-1500-8	1500 cc/min	8	40mm	14mm	\$1,549
16S-00-2200-8	220lb/hr 2200cc/min	8	40mm	14mm	\$1,529

Standard Series (48mm)

Part #	Flow Rate	Qty	Height	Fuel Rail Bore	Price
17U-00-0050-8	50lb/hr 550cc/min	8	48mm	14mm	\$629
17U-00-0060-8	60lb/hr 650cc/min	8	48mm	14mm	\$679
17U-00-0072-8	72lb/hr 750cc/min	8	48mm	14mm	\$699
17U-00-0095-8	95lb/hr 1000cc/min	8	48mm	14mm	\$699
16MX-30-1200-8	1200 cc/min	8	48mm	14mm	\$1,029
16M-30-1500-8	1500 cc/min	8	48mm	14mm	\$1,549
16S-12-2200-8	220lb/hr 2200cc/min	8	48mm	14mm	\$1,529
16S-10-2200-8	220lb/hr 2200cc/min	8	48mm	11mm	\$1,529

Long Series (60mm)

Part #	Flow Rate	Qty	Height	Fuel Rail Bore	Price
18U-00-0042-8	42lb/hr 440cc/min	8	60mm	14mm	\$479
18U-00-0050-8	50lb/hr 550cc/min	8	60mm	14mm	\$479
18U-00-0060-8	60lb/hr 650cc/min	8	60mm	14mm	\$519
18U-00-0078-8	78lb/hr 800cc/min	8	60mm	14mm	\$519
18U-00-0088-8	88lb/hr 900cc/min	8	60mm	14mm	\$599
16MX-20-1200-8	1200 cc/min	8	60mm	14mm	\$1,029
16M-20-1500-8	1500 cc/min	8	60mm	14mm	\$1,549
16S-13-2200-8	220lb/hr 2200cc/min	8	60mm	14mm	\$1,529
16S-11-2200-8	220lb/hr 2200cc/min	8	60mm	11mm	\$1,529

6 CYLINDER

Compact series (40mm)

Part #	Flow Rate	Qty	Height	Fuel Rail Bore	Price
16U-00-0042-6	42lb/hr 440cc/min	6	40mm	14mm	\$379
16U-00-0050-6	50lb/hr 550cc/min	6	40mm	14mm	\$379
16U-00-0065-6	65lb/hr 700cc/min	6	40mm	14mm	\$379
16U-00-0090-6	90lb/hr 950cc/min	6	40mm	14mm	\$499
16MX-00-1200-6	1200 cc/min	6	40mm	14mm	\$799
16M-00-1500-6	1500 cc/min	6	40mm	14mm	\$1,229
16S-00-2200-6	220lb/hr 2200cc/min	6	40mm	14mm	\$1,199

Standard Series (48mm)

Part #	Flow Rate	Qty	Height	Fuel Rail Bore	Price
17U-00-0050-6	50lb/hr 550cc/min	6	48mm	14mm	\$499
17U-00-0060-6	60lb/hr 650cc/min	6	48mm	14mm	\$539
17U-00-0072-6	72lb/hr 750cc/min	6	48mm	14mm	\$559
17U-00-0095-6	95lb/hr 1000cc/min	6	48mm	14mm	\$559
16MX-30-1200-6	1200 cc/min	6	48mm	14mm	\$799
16M-30-1500-6	1500 cc/min	6	48mm	14mm	\$1,229
16S-12-2200-6	220lb/hr 2200cc/min	6	48mm	14mm	\$1,199
16S-10-2200-6	220lb/hr 2200cc/min	6	48mm	11mm	\$1,199

Long Series (60mm)

Part #	Flow Rate	Qty	Height	Fuel Rail Bore	Price
18U-00-0042-6	42lb/hr 440cc/min	6	60mm	14mm	\$379
18U-00-0050-6	50lb/hr 550cc/min	6	60mm	14mm	\$379
18U-00-0060-6	60lb/hr 650cc/min	6	60mm	14mm	\$399
18U-00-0078-6	78lb/hr 800cc/min	6	60mm	14mm	\$399
18U-00-0088-6	88lb/hr 900cc/min	6	60mm	14mm	\$459
16MX-20-1200-6	1200 cc/min	6	60mm	14mm	\$799
16M-20-1500-6	1500 cc/min	6	60mm	14mm	\$1,229
16S-13-2200-6	220lb/hr 2200cc/min	6	60mm	14mm	\$1,199
16S-11-2200-6	220lb/hr 2200cc/min	6	60mm	11mm	\$1,199



Compact (40mm EV14) Standard (48mm EV14) Long (60mm EV14)

2016 Ford Cobra Jet Mustang

DeatschWerks 95lb Injectors were chosen by Ford Performance as the injector for all 2016 Cobra Jet Mustangs as well as the injector for all 2016 Cobra Jet crate engines.



*Contact DW tech support for additional assistance in selecting EV14 injectors.

LINES & FITTINGS

PRICE GUIDE

FITTINGS			
	Description	Part Number	Price
	8AN ORB to 6AN male	6-02-0401	\$9
	8AN ORB to 8AN male	6-02-0402	\$9
	10AN ORB to 10AN male	6-02-0403	\$9
	6AN ORB to 6AN Flare	6-02-0404	\$7.50
	6AN ORB to 8AN Flare	6-02-0405	\$8
	10AN ORB to 8AN Flare	6-02-0406	\$8.50
	10AN ORB to 6AN Flare	6-02-0407	\$8
	6AN to 1/4" NPT	6-02-0901	\$6.50
	6AN to 3/8" NPT	6-02-0902	\$6.50
	6AN to 1/2" NPT	6-02-0903	\$6.50
	8AN to 1/4" NPT	6-02-0904	\$7
	8AN to 3/8" NPT	6-02-0905	\$7
	8AN to 1/2" NPT	6-02-0906	\$7
	1/8" NPT to 1/4" Single Hose Barb Adapter	6-02-0915	\$6
	1/8" NPT to 1/4" Single Hose Barb Adapter	6-02-0916	\$9
	1/8" NPT to 1/4" Single Hose Barb Adapter	6-02-0917	\$9
	6AN male to 6AN male coupler	6-02-0202	\$7
	8AN male to 6AN male coupler	6-02-0203	\$8
	8AN male to 8AN male coupler	6-02-0204	\$7
	10AN male to 6AN male	6-02-0205	\$7.50
	10AN ORB to 8AN male	6-02-0206	\$8
AN Couplers & Adapters	6AN ORB to 6AN male 90°	6-02-0207	\$11
	8AN ORB to 8AN male 90°	6-02-0208	\$12
	6AN Female Swivel to 6AN Flare Swivel	6-02-0209	\$8.50
	8AN Female Swivel to 8AN Flare Swivel	6-02-0210	\$10.50
	10AN Female Swivel to 10AN Flare Swivel	6-02-0211	\$12.50
	6AN Female Swivel to 6AN Flare Swivel 45°	6-02-0212	\$18
	8AN Female Swivel to 8AN Flare Swivel 45°	6-02-0213	\$20
	10AN Female Swivel to 10AN Flare Swivel 45°	6-02-0214	\$22
	6AN Female Swivel to 6AN Flare Swivel 90°	6-02-0215	\$18.50
	8AN Female Swivel to 8AN Flare Swivel 90°	6-02-0216	\$20.50
	10AN Female Swivel to 10AN Flare Swivel 90°	6-02-0217	\$22.50
	6AN ORB Male to 3/8" Triple Barb	6-02-0501	\$9
	6AN ORB Male to 5/16" Triple Barb	6-02-0502	\$9
	6AN ORB Male to 1/2" Single Barb	6-02-0503	\$8.50
	6AN ORB Male to 3/8" Single Barb	6-02-0504	\$12
	6AN ORB Male to 5/16" Single Barb	6-02-0505	\$12
	8AN ORB Male to 1/2" Triple Barb	6-02-0506	\$10
	8AN ORB Male to 3/8" Triple Barb	6-02-0507	\$14
	8AN ORB Male to 1/2" Single Barb	6-02-0508	\$10
	8AN ORB Male to 3/8" Single Barb	6-02-0509	\$14
	8AN ORB Male to 5/16" Single Barb	6-02-0510	\$13
EFI Quick Connects & Hardline Adapters	6AN Male Flare to 5/16" Hardline Compression Adapter	6-02-0108	\$12
	6AN Male Flare to 3/8" Hardline Compression Adapter	6-02-0109	\$12
	8AN Male Flare to 3/8" Hardline Compression Adapter	6-02-0110	\$14
	8AN Male Flare to 1/2" Hardline Compression Adapter	6-02-0111	\$14
	6AN Male Flare to 3/8" Female EFI Quick Connect Adapter	6-02-0103	\$29

FITTINGS			
	Description	Part Number	Price
	8AN Male Flare to 3/8" Female EFI Quick Connect Adapter	6-02-0104	\$33
	6AN Male Flare to 3/8" Ford Male EFI Quick Connect Adapter	6-02-0105	\$23.50
	6AN Male Flare to 1/2" Ford Male EFI Quick Connect Adapter	6-02-0106	\$23.50
	8AN Male Flare to 1/2" Ford Male EFI Quick Connect Adapter	6-02-0107	\$23.50
	6AN Male Flare to 5/16" Male EFI Quick Connect Adapter	6-02-0112	\$12.50
	8AN Male Flare to 3/8" Male EFI Quick Connect Adapter	6-02-0113	\$13.50
EFI Quick Connects & Hardline Adapters	6AN ORB Male to 5/16" Male EFI Quick Connect Adapter (incl O-Ring)	6-02-0114	\$13.00
	8AN ORB Male to 3/8" Male EFI Quick Connect Adapter (incl O-Ring)	6-02-0115	\$14.00
	8AN ORB Male to 3/8" Male EFI Quick Connect Adapter 180° (incl O-Ring)	6-02-0116A	\$29.50
	6AN Male Flare to 1/4" Female EFI Quick Connect Adapter	6-02-0120	\$22.50
	6AN Male Flare to 5/16" Female EFI Quick Connect Adapter	6-02-0121	\$22.50
	8AN Male Flare to 5/16" Hardline Compression Adapter	6-02-0129	\$14
	8AN Male Flare to 5/16" Male EFI Quick Connect Adapter	6-02-0138	\$13.50
	8AN Male Flare to 5/16" Female EFI Quick Connect Adapter	6-02-0143	\$23
	-4 AN aluminum crush washer - QTY 10	6-02-0301	\$9
	-6 AN aluminum crush washer - QTY 10	6-02-0302	\$9
	-8 AN aluminum crush washer - QTY 10	6-02-0303	\$9
	-10 AN aluminum crush washer - QTY 10	6-02-0304	\$9
	-12 AN aluminum crush washer - QTY 10	6-02-0305	\$9
	ORB -4 viton o-ring - QTY 10	6-02-0306	\$11
	ORB -6 viton o-ring - QTY 10	6-02-0307	\$11
	ORB -8 viton o-ring - QTY 10	6-02-0308	\$11
	ORB -10 viton o-ring - QTY 10	6-02-0309	\$11
	ORB -12 viton o-ring - QTY 10	6-02-0310	\$11
	6AN PTFE Crush Washer (Pack of 10)	6-02-0330	\$2
	6AN PTFE Crush Washer (Pack of 10)	6-02-0331	\$2
	6AN PTFE Crush Washer (Pack of 10)	6-02-0332	\$2.50
	6AN PTFE Crush Washer (Pack of 10)	6-02-0333	\$8.50
	6AN PTFE Crush Washer (Pack of 10)	6-02-0334	\$12.50
	6AN PTFE Crush Washer (Pack of 10)	6-02-0335	\$15
	6AN Worm Drive Clamp	6-02-0350	\$5
	8AN Worm Drive Clamp	6-02-0351	\$5.50
	10AN Worm Drive Clamp	6-02-0352	\$6
	Rubber Cushioned P-Clamp for -6 Hose	6-02-0353	\$3
	Rubber Cushioned P-Clamp for -8 Hose	6-02-0354	\$3.25
	Rubber Cushioned P-Clamp for -10 Hose	6-02-0355	\$3.50
	Billet P-Clamp Titanium Finish -6 PTFE Hose	6-02-0356	\$3.50
	Billet P-Clamp Titanium Finish -8 PTFE Hose	6-02-0357	\$3.75
	Billet P-Clamp Titanium Finish -10 PTFE Hose	6-02-0358	\$6
	Billet P-Clamp Titanium Finish -10 CPE Hose	6-02-0359	\$7
	Billet Dual Hose Separator for -6 PTFE Hose	6-02-0360	\$5.50
	Billet Dual Hose Separator for -8 PTFE Hose	6-02-0361	\$5.75
	Billet Dual Hose Separator for -10 PTFE Hose	6-02-0362	\$5.50
	Billet Dual Hose Separator for -10 CPE Hose	6-02-0363	6

LINES & FITTINGS

PRICE GUIDE

FITTINGS			
	Description	Part Number	Price
Clamps, O-rings & Crush Washers	PTFE 6AN olive insert (ferrule) - QTY 10	6-02-0867	\$31
	PTFE 8AN olive insert (ferrule) - QTY 10	6-02-0868	\$33
	PTFE 10AN olive insert (ferrule) - QTY 10	6-02-0869	\$35
	Replacement Hard Line Compression Olives, 5/16" (Pack of 10)	6-02-0117	\$24
	Replacement Hard Line Compression Olives, 3/8" (Pack of 10)	6-02-0118	\$24
	Replacement Hard Line Compression Olives, 1/2" (Pack of 10)	6-02-0119	\$24
Metric Adapters	6AN ORB Male to M12 X 1.5 Metric Female	6-02-0601	\$6.50
	6AN ORB Male to M12 X 1.5 Metric Male	6-02-0602	\$5
	6AN ORB Male to M14 X 1.5 Metric Male	6-02-0603	\$5
	6AN ORB Male to M16 X 1.5 Metric Male	6-02-0604	\$5
	6AN ORB Male to M18 X 1.5 Metric Female	6-02-0605	\$8.50
	6AN ORB Male to M18 X 1.5 Metric Male	6-02-0606	\$8.50
	8AN ORB Male to M12 X 1.5 Metric Female	6-02-0607	\$9.90
	8AN ORB Male to M12 X 1.5 Metric Male	6-02-0608	\$10
	8AN ORB Male to M14 X 1.5 Metric Male	6-02-0609	\$10
	8AN ORB Male to M16 X 1.5 Metric Male	6-02-0610	\$10
	8AN ORB Male to M18 X 1.5 Metric Female	6-02-0611	\$7
	8AN ORB Male to M18 X 1.5 Metric Male	6-02-0612	\$5
	6AN Male Flare to M12 X 1.5 Male Metric Adapter	6-02-0613	\$6.50
	6AN Male Flare to M14 X 1.5 Male Metric Adapter	6-02-0614	\$6.50
	6AN Male Flare to M16 X 1.5 Male Metric Adapter	6-02-0615	\$6.50
	6AN Male Flare to M18 X 1.5 Male Metric Adapter	6-02-0616	\$6.50
	8AN Male Flare to M12 X 1.5 Male Metric Adapter	6-02-0617	\$7
	8AN Male Flare to M14 X 1.5 Male Metric Adapter	6-02-0618	\$7
	8AN Male Flare to M16 X 1.5 Male Metric Adapter	6-02-0619	\$7
	8AN Male Flare to M18 X 1.5 Male Metric Adapter	6-02-0620	\$7
Hose End Fittings	6AN Straight Hose End Swivel	6-02-0801	\$9.50
	6AN 45° Hose End Swivel	6-02-0802	\$23.50
	6AN 90° Hose End Swivel	6-02-0803	\$22.50
	6AN 180° Hose End Swivel	6-02-0804	\$27.50
	8AN Straight Hose End Swivel	6-02-0805	\$10.50
	8AN 45° Hose End Swivel	6-02-0806	\$26.50
	8AN 90° Hose End Swivel	6-02-0807	\$25.50
	8AN 180° Hose End Swivel	6-02-0808	\$34.50
	10AN Straight Hose End Swivel	6-02-0809	\$14.50
	10AN 45° Hose End Swivel	6-02-0810	\$31.50
	10AN 90° Hose End Swivel	6-02-0811	\$30.50
	6AN Straight PTFE Hose End	6-02-0850	\$13
	6AN 30° Hose End CPE	6-02-0818	\$23.50
	6AN 60° Hose End CPE	6-02-0819	\$23.50
	6AN 120° Hose End CPE	6-02-0820	\$23.50
	8AN 30° Hose End CPE	6-02-0821	\$26.50
	8AN 60° Hose End CPE	6-02-0822	\$26.50

FITTINGS			
	Description	Part Number	Price
Hose End Fittings	8AN 120° Hose End CPE	6-02-0823	\$30
	10AN 30° Hose End CPE	6-02-0824	\$31.50
	10AN 60° Hose End CPE	6-02-0825	\$31.50
	10AN 120° Hose End CPE	6-02-0826	\$31.50
	10AN 180° Hose End CPE	6-02-0833	\$37
	6AN 45° PTFE Hose End	6-02-0851	\$29
	6AN 90° PTFE Hose End	6-02-0852	\$29
	6AN 180° PTFE Hose End	6-02-0853	\$30
	8AN Straight PTFE Hose End	6-02-0854	\$16
	8AN 45° PTFE Hose End	6-02-0855	\$33
	8AN 90° PTFE Hose End	6-02-0856	\$33
	8AN 180° PTFE Hose End	6-02-0857	\$35
	10AN Straight PTFE Hose End	6-02-0858	\$20
	10AN 45° PTFE Hose End	6-02-0859	\$35
	10AN 90° PTFE Hose End	6-02-0860	\$35
	6AN 30° PTFE Hose End	6-02-0870	\$29
	6AN 60° PTFE Hose End	6-02-0871	\$29
	6AN 120° PTFE Hose End	6-02-0872	\$29
	8AN 30° PTFE Hose End	6-02-0873	\$33
	8AN 60° PTFE Hose End	6-02-0874	\$33
	8AN 120° PTFE Hose End	6-02-0875	\$33
	10AN 30° PTFE Hose End	6-02-0876	\$35
	10AN 60° PTFE Hose End	6-02-0877	\$35
	10AN 120° PTFE Hose End	6-02-0878	\$35
	10AN 180° PTFE Hose End	6-02-0885	\$37
	6AN + 6AN to 6AN Y Block	6-02-0701	\$27
	6AN + 6AN to 8AN Y Block	6-02-0702	\$45
	8AN + 8AN to 10AN Y Block	6-02-0703	\$45
	8AN + 8AN to 8AN Y Block	6-02-0706	\$38
	10AN + 10AN to 10AN Y-Block	6-02-0707	\$42
6AN to 6AN Bulkhead	6-02-0708	\$11	
8AN to 8AN Bulkhead	6-02-0709	\$12	
6AN to 6AN 90° Bulkhead	6-02-0710	\$14	
8AN to 8AN 90° Bulkhead	6-02-0711	\$15	
6AN to 5/16" Barb 90° Bulkhead	6-02-0712	\$15	
8AN to 5/16" Barb 90° Bulkhead	6-02-0713	\$16	
6AN Flare Cap	6-02-0714	\$5	
8AN Flare Cap	6-02-0715	\$6	
10AN Flare Cap	6-02-0716	\$7	
6AN ORB Plug, Low Profile Internal Hex	6-02-0717	\$4.50	
8AN ORB Plug, Low Profile Internal Hex	6-02-0718	\$5	
10AN ORB Plug, Low Profile Internal Hex	6-02-0719	\$5.50	
6AN to 6AN Tee	6-02-0721	\$13	
8AN to 8AN Tee	6-02-0722	\$16	
6AN Male Flare One Way Check Valve	6-02-0723	\$47	
8AN Male Flare One Way Check Valve	6-02-0724	\$49	
10AN Male Flare One Way Check Valve	6-02-0725	\$53	
6AN Male Flare to Fuel Pump Outlet Barb Adapter (black)	6-02-0735	\$13.50	
8AN Male Flare to Fuel Pump Outlet Barb Adapter (black)	6-02-0736	\$15.50	
DW250iL metric kit to replace Bosch O44	6-02-0101	\$12	
DW350iL metric kit to replace Bosch O44	6-02-0102	\$15	

LINES & FITTINGS PRICE GUIDE

HOSES			
	Description	Part Number	Price
CPE Hose	6AN SS Braided CPE Hose (3 feet)	6-02-0812-3	\$24
	6AN SS Braided CPE Hose (10 feet)	6-02-0812-10	\$76
	6AN SS Braided CPE Hose (20 feet)	6-02-0812-20	\$144
	8AN SS Braided CPE Hose (3 feet)	6-02-0813-3	\$30
	8AN SS Braided CPE Hose (10 feet)	6-02-0813-10	\$95
	8AN SS Braided CPE Hose (20 feet)	6-02-0813-20	\$179
	10AN SS Braided CPE Hose (3 feet)	6-02-0814-3	\$36
	10AN SS Braided CPE Hose (10 feet)	6-02-0814-10	\$114
	10AN SS Braided CPE Hose (20 feet)	6-02-0814-20	\$216
	6AN Black Nylon CPE Hose (3 feet)	6-02-0815-3	\$24
	6AN Black Nylon CPE Hose (10 feet)	6-02-0815-10	\$76
	6AN Black Nylon CPE Hose (20 feet)	6-02-0815-20	\$144
	8AN Black Nylon CPE Hose (3 feet)	6-02-0816-3	\$30
	8AN Black Nylon CPE Hose (10 feet)	6-02-0816-10	\$95
	8AN Black Nylon CPE Hose (20 feet)	6-02-0816-20	\$179
	10AN Black Nylon CPE Hose (3 feet)	6-02-0817-3	\$36
	10AN Black Nylon CPE Hose (10 feet)	6-02-0817-10	\$114
	10AN Black Nylon CPE Hose (20 feet)	6-02-0817-20	\$216
PTFE Hose	6AN SS Braided PTFE Hose (3 feet)	6-02-0861-3	\$27
	6AN SS Braided PTFE Hose (10 feet)	6-02-0861-10	\$85
	6AN SS Braided PTFE Hose (20 feet)	6-02-0861-20	\$162
	8AN SS Braided PTFE Hose (3 feet)	6-02-0862-3	\$33
	8AN SS Braided PTFE Hose (10 feet)	6-02-0862-10	\$104
	8AN SS Braided PTFE Hose (20 feet)	6-02-0862-20	\$198
	10AN SS Braided PTFE Hose (3 feet)	6-02-0863-3	\$39
	10AN SS Braided PTFE Hose (10 feet)	6-02-0863-10	\$123
	10AN SS Braided PTFE Hose (20 feet)	6-02-0863-20	\$234
	6AN Black Nylon PTFE Hose (3 feet)	6-02-0864-3	\$33
	6AN Black Nylon PTFE Hose (10 feet)	6-02-0864-10	\$104
	6AN Black Nylon PTFE Hose (20 feet)	6-02-0864-20	\$198
	8AN Black Nylon PTFE Hose (3 feet)	6-02-0865-3	\$39
	8AN Black Nylon PTFE Hose (10 feet)	6-02-0865-10	\$123.50
	8AN Black Nylon PTFE Hose (20 feet)	6-02-0865-20	\$234.65
10AN Black Nylon PTFE Hose (3 feet)	6-02-0866-3	\$45	
10AN Black Nylon PTFE Hose (10 feet)	6-02-0866-10	\$142.50	
10AN Black Nylon PTFE Hose (20 feet)	6-02-0866-20	\$270.75	

AN TOOLS			
	Description	Part Number	Price
AN tools	4AN T6061 Aluminum Hose End Wrench	6-02-1001	\$22
	6AN T6061 Aluminum Hose End Wrench	6-02-1002	\$24
	8AN T6061 Aluminum Hose End Wrench	6-02-1003	\$24
	10AN T6061 Aluminum Hose End Wrench	6-02-1004	\$24
	12AN T6061 Aluminum Hose End Wrench	6-02-1005	\$26
	Adjustable AN Hose End Wrench (black anodized)	6-02-1006	\$69
	4" Aluminum Soft Jaws with Magnet (orange anodized)	6-02-1007	\$29
	T6061 AN Hose End Wrench Set (Sizes 4, 6, 8, 10,12)	6-02-1009	\$99



MODULAR SURGE TANKS, REGULATORS & FILTRATION

STAGED SURGE TANKS

DW5.5 SST	6-000-55ST	\$429
DW5.5 SST + 3 DW200	6-201-55ST	\$649
DW5.5 SST + 3 DW300	6-301-55ST	\$799
DW5.5 SST + 3 DW400	6-401-55ST	\$1,049

MODULAR SURGE TANKS

DW3.5L Modular Surge Tank	6-000-35ST	\$399
DW3.5L Modular Surge Tank + 1 DW350iL	6-351-35ST	\$587
DW3.5L Modular Surge Tank + 2 DW350iL	6-352-35ST	\$875
DW2.5L Modular Surge Tank	6-000-25ST	\$379
DW2.5L Modular Surge Tank + 1 DW250iL	6-251-25ST	\$507
DW2.5L Modular Surge Tank + 2 DW250iL	6-252-25ST	\$715
Surge Tank Pre-Filters For DW350iL	8-01-08100	\$79
Surge Tank Pre-Filters For DW250iL	8-01-06100	\$79



ADJUSTABLE FUEL PRESSURE REGULATORS

DWR1000	Black	Dual -8 inlet Single -6 outlet	6-1000-FRB	\$159
DWR1000	Titanium	Dual -8 inlet Single -6 outlet	6-1000-FRT	\$159
DWR2000	Black	Dual -10 inlet Single -8 outlet	6-2000-FRB	\$159
DWR2000	Titanium	Dual -10 inlet Single -8 outlet	6-2000-FRT	\$159
DWR1000iL	Black	Single -6 inlet Single -6 outlet	6-1001-FRB	\$159
DWR1000iL	Titanium	Single -6 inlet Single -6 outlet	6-1001-FRT	\$159
DWR2000 Carburetor	Black	Dual -10 inlet Single -8 outlet	6-2001-FRB	\$159
DWR2000 Carburetor	Titanium	Dual -10 inlet Single -8 outlet	6-2001-FRT	\$159
Fuel Pressure Gauge	White Face	0-100 PSI	6-01-G	\$29



IN-LINE FUEL FILTERS KITS

70mm	Filter element	10 Micron	8-03-070-010K	\$79
	w/ housing	100 Micron	8-03-070-100K	\$79
110mm	Filter element	10 Micron	8-03-110-010K	\$109
	w/ housing	100 Micron	8-03-110-100K	\$109
160mm	Filter element	10 Micron	8-03-160-010K	\$159
	w/ housing	100 Micron	8-03-160-100K	\$159
Mounting Bracket			8-04-00-BRK	\$39
Subaru In-tank Filter	04-07 WRX, STI, & Outback	40 Micron	8-05-01-040	\$89

REPLACEMENT FUEL FILTERS ELEMENTS

70mm	Filter element	10 Micron	8-02-070-010	\$29
		100 Micron	8-02-070-100	\$29
110mm	Filter element	10 Micron	8-02-110-010	\$39
		100 Micron	8-02-110-100	\$39
160mm	Filter element	10 Micron	8-02-160-010	\$59
		100 Micron	8-02-160-100	\$59



FUEL RAIL PRICE GUIDE

FUEL RAILS BY MAKE/MODEL

Make	BILLET RAILS	CROSS-OVER	PLUMBING KIT	INJECTORS	GAS HP	E85 HP	Part #	Price
Mustang 5.0 2011-17 F-150 5.0 2011-17	Y	-	-	-	-	-	7-300	\$259
	Y	Y	-	-	-	-	7-301-OE	\$359
	Y	Y	OE RETURNLESS	1000cc	1100+	900+	7-301-OE-1000	\$1,029
	Y	Y	OE RETURNLESS	1200cc	1500+	1100+	7-301-OE-1200	\$1,349
	Y	Y	OE RETURNLESS	1500cc	1700+	1400+	7-301-OE-1500	\$1,869
	Y	Y	RETURN	1000cc	1150+	950+	7-301-RTN-1000	\$1,828
	Y	Y	RETURN	1200cc	1550+	1150+	7-301-RTN-1200	\$2,139
	Y	Y	RETURN	1500cc	1750+	1450+	7-301-RTN-1500	\$2,629
GM LS1 / LS6	Y	-	-	-	-	-	7-200	\$289
	Y	Y	-	-	-	-	7-201	\$349
	Y	Y	-	420cc	550+	400+	7-201-0420	\$799
	Y	Y	-	780cc	850+	750+	7-201-0780	\$839
	Y	Y	-	1000cc	1100+	900+	7-201-1000	\$999
	Y	Y	OE RETURNLESS	420cc	550+	400+	7-201-OE-0420	\$930
	Y	Y	OE RETURNLESS	780cc	850+	750+	7-201-OE-0780	\$989
	Y	Y	OE RETURNLESS	1000cc	1100+	900+	7-201-OE-1000	\$1,159
	Y	Y	RETURN	420cc	600+	450+	7-201-RTN-0420	\$1,649
	Y	Y	RETURN	780cc	900+	800+	7-201-RTN-0780	\$1,689
	Y	Y	RETURN	1000cc	1150+	950+	7-201-RTN-1000	\$1,859

TOP FEED UPGRADE KIT W/ INJECTORS

Make / Model	Year	Flow Rate	Part #	Price	
STI	2007-2015	750cc	6-102-0750	\$599	
		1000cc	6-102-1000	\$599	
		1200cc	6-102-1200	\$749	
		1500cc	6-102-1500	\$949	
		2200cc	6-102-2200	\$989	
	WRX	2002-2014	750cc	6-102-0750	\$599
			1000cc	6-102-1000	\$599
			1200cc	6-102-1200	\$749
			1500cc	6-102-1500	\$949
			2200cc	6-102-2200	\$989
Legacy GT	2007-2012	750cc	6-102-0750	\$579	
		1000cc	6-102-1000	\$599	
		1200cc	6-102-1200	\$749	
		1500cc	6-102-1500	\$949	
		2200cc	6-102-2200	\$989	

TOP FEED CONVERSION KIT W/ INJECTORS

Make / Model	Year	Flow Rate	Part #	Price	
STI	2004-2006	850cc	6-101-0850	\$579	
		1000cc	6-101-1000	\$629	
		1200cc	6-101-1200	\$749	
		1500cc	6-101-1500	\$949	
		2200cc	6-101-2200	\$989	
	Legacy GT	2004-2006	850cc	6-101-0850	\$579
			1000cc	6-101-1000	\$629
			1200cc	6-101-1200	\$749
			1500cc	6-101-1500	\$949
			2200cc	6-101-2200	\$989
WRX/STI 2.0T	1992-1998	750cc	6-103-0850	\$579	
		1000cc	6-103-1000	\$629	
		1200cc	6-103-1200	\$749	
		1500cc	6-103-1500	\$949	
		2200cc	6-103-2200	\$989	
	WRX/STI 2.0T	1999-2000	750cc	6-104-0850	\$579
			1000cc	6-104-1000	\$629
			1200cc	6-104-1200	\$749
			1500cc	6-104-1500	\$949
			2200cc	6-104-2200	\$989

POWER SPORTS PRICE GUIDE

APPLICATION			FUEL INJECTORS			
	Model	Year	Part #	Flow Rate	Set Qty	Price
ATV						
	Outlander 500 2006-2015	2006-2015	16U-43-0440-2	440cc/min	2	\$139
			16U-43-0550-2	550cc/min	2	\$139
			16U-43-0700-2	700cc/min	2	\$139
			16MX-43-0900-2	900cc/min	2	\$279
			16MX-43-1200-2	1200cc/min	2	\$279
	Outlander 650	2006-2017	16U-43-0440-2	440cc/min	2	\$139
			16U-43-0550-2	550cc/min	2	\$139
			16U-43-0700-2	700cc/min	2	\$139
			16MX-43-0900-2	900cc/min	2	\$279
	Outlander 800	2006-2015	16U-43-0440-2	440cc/min	2	\$139
			16U-43-0550-2	550cc/min	2	\$139
			16U-43-0700-2	700cc/min	2	\$139
16MX-43-0900-2			900cc/min	2	\$279	
Can Am	Outlander 1000	2012-2017	16MX-43-1200-2	1200cc/min	2	\$279
			16U-43-0440-2	440cc/min	2	\$139
			16U-43-0550-2	550cc/min	2	\$139
			16U-43-0700-2	700cc/min	2	\$139
			16MX-43-0900-2	900cc/min	2	\$279
	Renegade 500	2008-2015	16MX-43-1200-2	1200cc/min	2	\$279
			16U-43-0440-2	440cc/min	2	\$139
			16U-43-0550-2	550cc/min	2	\$139
			16U-43-0700-2	700cc/min	2	\$139
	Renegade 800	2007-2015	16MX-43-0900-2	900cc/min	2	\$279
			16MX-43-1200-2	1200cc/min	2	\$279
			16U-43-0440-2	440cc/min	2	\$139
16U-43-0550-2			550cc/min	2	\$139	
Renegade 1000	2012-2017	16U-43-0700-2	700cc/min	2	\$139	
		16MX-43-0900-2	900cc/min	2	\$279	
		16MX-43-1200-2	1200cc/min	2	\$279	
		16U-43-0440-2	440cc/min	2	\$139	
Yamaha	Raptor 700	2006-2017	16U-43-0550-2	550cc/min	2	\$139
			16U-43-0700-2	700cc/min	2	\$139
			16MX-43-0900-2	900cc/min	2	\$279
			16MX-43-1200-2	1200cc/min	2	\$279
			17MX-47-0600-1	600cc/min	1	\$119
	YZ450R	2009-2015	17MX-47-0850-1	850cc/min	1	\$119
			17MX-47-1100-1	1100cc/min	1	\$129
			16M-47-1500-1	1500cc/min	1	\$209
			16S-47-2200-1	2200cc/min	1	\$219
			16U-46-0700-1	700cc/min	1	\$89
			16U-46-0900-1	900cc/min	1	\$119
			16MX-46-1200-1	1200cc/min	1	\$139
16M-46-1500-1	1500cc/min	1	\$209			
Dirt Bike						
Honda	CRF450r	2009-2016	16U-48-0550-1	550cc/min	1	\$89
			16U-48-0700-1	700cc/min	1	\$89
			16U-48-0900-1	900cc/min	1	\$119
			16M-48-1500-1	1500cc/min	1	\$209
Kawasaki	KX450F	2009-2015	16U-44-0550-1	550cc/min	1	\$89
			16U-44-0700-1	700cc/min	1	\$89
			16U-44-0900-1	900cc/min	1	\$119
			16MX-44-1200-1	1200cc/min	1	\$139
			16M-44-1500-1	1500cc/min	1	\$209
Yamaha	YZ450f	2010-2015	16U-46-0700-1	700cc/min	1	\$89
			16U-46-0900-1	900cc/min	1	\$119
			16MX-46-1200-1	1200cc/min	1	\$139
			16M-46-1500-1	1500cc/min	1	\$209

APPLICATION			FUEL INJECTORS			
Model	Year	Part #	Flow Rate	Set Qty	Price	
Slingshot						
Polaris	Slingshot	2015-2017	18U-00-0650-4	650cc/min	4	\$289
			18U-00-0900-4	900cc/min	4	\$319
Snowmobile						
	M1000	2007-2011	16MX-13-1200-2	1200cc/min	2	\$279
			16M-13-1500-2	1500cc/min	2	\$419
	M8	2009-2011	16MX-13-1200-2	1200cc/min	2	\$279
			16M-13-1500-2	1500cc/min	2	\$419
Arctic Cat	M9000	2012-2016	16U-44-0550-2	550cc/min	2	\$179
			16U-44-0700-2	700cc/min	2	\$179
			16U-44-0900-2	900cc/min	2	\$219
			16MX-44-1200-2	1200cc/min	2	\$279
			16M-44-1500-2	1500cc/min	2	\$419
			16MX-13-1200-2	1200cc/min	2	\$279
	XF/M 800	2012-2013	16M-13-1500-2	1500cc/min	2	\$419
			16MX-13-1200-2	1200cc/min	2	\$279
	XF/M 8000	2014-2017	16M-13-1500-2	1500cc/min	2	\$419
			16U-12-0900-2	900cc/min	2	\$189
	Axys Pro RMK	2016-2017	16M-42-1500-2	1500cc/min	2	\$419
			17U-41-0750-2	750cc/min	2	\$199
	FST	2006-2010	17U-41-1000-2	1000cc/min	2	\$209
			16MX-30-1200-2	1200cc/min	2	\$279
			16M-30-15000-2	1500cc/min	2	\$419
Polaris	Rush 600	2011-2012	16mx-41-0900-4	900cc/min	4	\$549
			16MX-41-1200-4	1200cc/min	4	\$549
			16M-41-1500-4	1500cc/min	4	\$829
	Rush 800	2011-2015	16U-12-0900-2	900cc/min	2	\$189
			16M-42-1500-2	1500cc/min	2	\$419
	Rush 600	2013-2015	16U-12-0900-2	900cc/min	2	\$189
			16M-42-1500-2	1500cc/min	2	\$419
Ski-Doo	1200 4-Tec	2009-2012	16U-43-0440-3	440cc/min	3	\$199
			16U-43-0550-3	550cc/min	3	\$199
			16U-43-0700-3	700cc/min	3	\$199
			16MX-43-0900-3	900cc/min	3	\$409
			16MX-43-1200-3	1200cc/min	3	\$409
	Apex	2006-2012	16U-45-0500-4	500cc/min	4	\$349
			16-45-0700-4	700cc/min	4	\$349
			16U-45-0900-4	900cc/min	4	\$449
			16MX-45-1200-4	1200cc/min	4	\$549
			16M-45-1500-4	1500cc/min	4	\$829
Yamaha	Nytro	2008-2012	16U-46-0550-3	550cc/min	3	\$269
			16U-46-0700-3	700cc/min	3	\$269
			16U-46-0900-3	900cc/min	3	\$339
			16MX-46-1200-3	1200cc/min	3	\$409
			16M-46-1500-3	1500cc/min	3	\$629
	Viper	2014-2016	16U-46-0550-3	550cc/min	3	\$269
			16U-46-0700-3	700cc/min	3	\$269
			16U-46-0900-3	900cc/min	3	\$339
			16MX-46-1200-3	1200cc/min	3	\$489
			16M-46-1500-3	1500cc/min	3	\$629
UTV						
Can Am	Commander 1000	2011-2017	16U-43-0440-2	440cc/min	2	\$139
			16U-43-0550-2	550cc/min	2	\$139
			16U-43-0700-2	700cc/min	2	\$139
			16MX-43-0900-2	900cc/min	2	\$279
			16MX-43-1200-2	1200cc/min	2	\$279
	Maverick Turbo 1000	2015-2017	16U-43-0550-2	550cc/min	2	\$139
			16U-43-0700-2	700cc/min	2	\$139
			16MX-43-0900-2	900cc/min	2	\$279
			16MX-43-1200-2	1200cc/min	2	\$279
			17U-00-0550-2	550cc/min	2	\$189
	Ranger 800	2011-2014	17U-00-0750-2	750cc/min	2	\$199
			17U-00-1000-2	1000cc/min	2	\$199
			17U-00-0550-2	550cc/min	2	\$189
	RZR 800	2011-2014	17U-00-0750-2	750cc/min	2	\$199
			17U-00-1000-2	1000cc/min	2	\$199
			16U-12-0550-2	550cc/min	2	\$139
Polaris	RZR XP 900	2011-2014	16U-12-0700-2	700cc/min	2	\$139
			16U-12-0900-2	900cc/min	2	\$189
			16U-12-0550-2	550cc/min	2	\$139
	RZR XP 1000	2014-2016	16MX-42-0900-2	900cc/min	2	\$279
			16MX-42-1200-2	1200cc/min	2	\$279
			16U-40-0700-2	700cc/min	2	\$139
	RZR XP Turbo	2016-2017	16U-40-0900-2	900cc/min	2	\$189
			16M-40-1500-2	1500cc/min	2	\$419

APPLICATION			FUEL INJECTORS				
	Model	Year	Part #	Flow Rate	Set Qty	Price	
WaterCraft	GTX 215	2003-2009	17MX-41-0600-3	650cc/min	3	\$349	
			17MX-41-0850-3	900cc/min	3	\$349	
			17MX-41-1100-3			\$369	
	RXP 215	2004-2009	17MX-41-0600-3	600cc/min	3	\$349	
			17MX-41-0850-3	850cc/min	3	\$349	
			17MX-41-1100-3	1100cc/min	3	\$369	
	RXT 215	2005-2009	17MX-41-0600-3	600cc/min	3	\$349	
			17MX-41-0850-3	850cc/min	3	\$349	
			17MX-41-1100-3	1100cc/min	3	\$369	
	GTX 260	2011-2017	17MX-41-0600-3	600cc/min	3	\$349	
			17MX-41-0850-3	850cc/min	3	\$349	
			17MX-41-1100-3	1100cc/min	3	\$369	
	Sea-Doo	RXP 260	2012-2015	17MX-41-0600-3	600cc/min	3	\$349
				17MX-41-0850-3	850cc/min	3	\$349
				17MX-41-1100-3	1100cc/min	3	\$369
RXT 260		2011-2017	17MX-41-0600-3	600cc/min	3	\$349	
			17MX-41-0850-3	850cc/min	3	\$349	
			17MX-41-1100-3	1100cc/min	3	\$369	
GTX 300		2016-2017	17MX-41-0850-3	850cc/min	3	\$349	
			17MX-41-1100-3	1100cc/min	3	\$369	
RXP 300		2016-2017	17MX-41-0850-3	850cc/min	3	\$349	
			17MX-41-1100-3	1100cc/min	3	\$369	
RXT 300		2016-2017	17MX-41-0850-3	850cc/min	3	\$349	
			17MX-41-1100-3	1100cc/min	3	\$369	
RXT IS 255	2009	17MX-41-0600-3	600cc/min	3	\$349		
		17MX-41-0850-3	850cc/min	3	\$349		
		17MX-41-1100-3	1100cc/min	3	\$369		
Yamaha	FX SHO	2008-2012	16U-45-0700-4	700cc/min	4	\$349	
			16U-45-0900-4	900cc/min	4	\$449	
			16MX-45-1200-4	1200cc/min	4	\$549	
			16M-45-1500-4	1500cc/min	4	\$829	
	FZR	2009-2013	16U-45-0700-4	700cc/min	4	\$349	
			16U-45-0900-4	900cc/min	4	\$449	
			16MX-45-1200-4	1200cc/min	4	\$549	
			16M-45-1500-4	1500cc/min	4	\$829	
	FZS	2009-2013	16U-45-0700-4	700cc/min	4	\$349	
			16U-45-0900-4	900cc/min	4	\$449	
			16MX-45-1200-4	1200cc/min	4	\$549	
			16M-45-1500-4	1500cc/min	4	\$829	

FUEL INJECTOR O-RING KITS

FULL SHOP KITS

Sport Compact & Euro injector o-ring kit	2-201	\$89
Modern Muscle injector o-ring kit	2-202	\$79
Master Shop Injector o-ring kit	2-203	\$199

REPLACEMENT SETS

Replacement O-ring Set 4 CYL	2-000-4	\$14
Replacement O-ring Set 6 CYL	2-000-6	\$21
Replacement O-ring Set 6 CYL	2-000-8	\$28



Global Time Attack Driver Savanna Little

Global Time Attack Driver Savanna Little runs DeatschWerks 50lb injectors in her LS3 Swapped Nissan 350z making almost 600hp.



415 E. Hill St. Oklahoma City, OK 73105

Phone: 1.405.217.0701

Toll Free: 1.800.419.6023

www.deatschwerks.com

